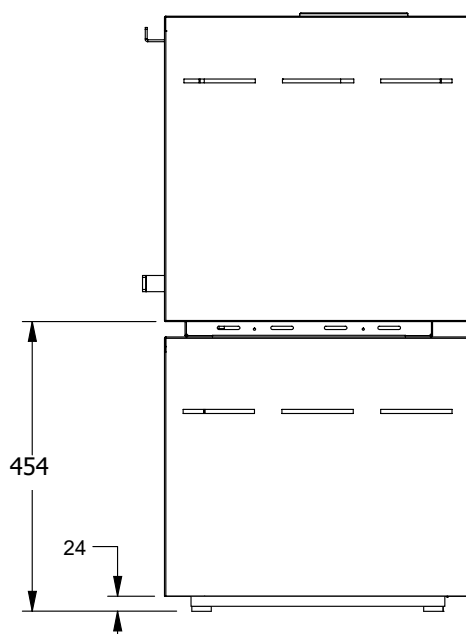
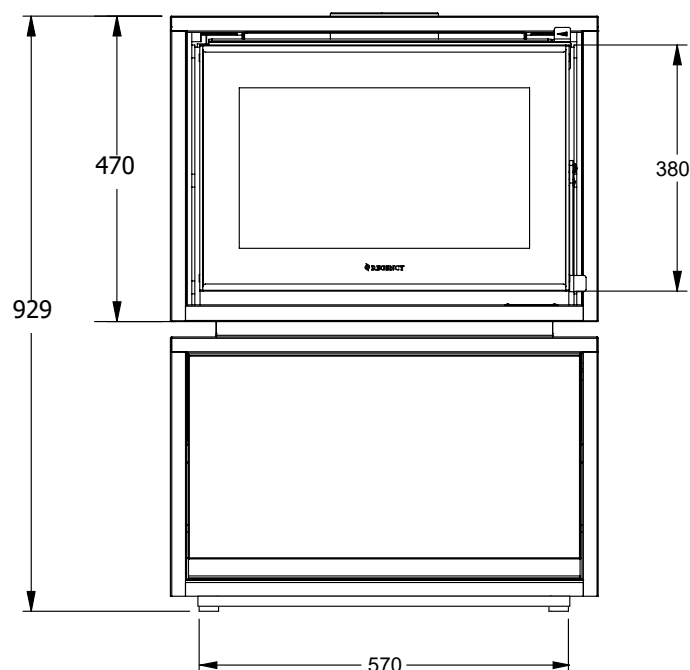
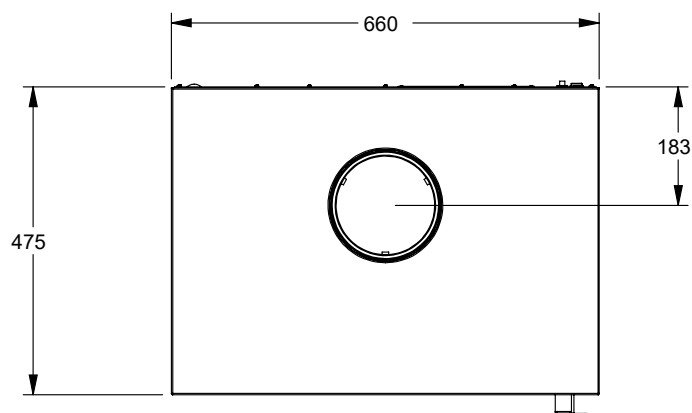
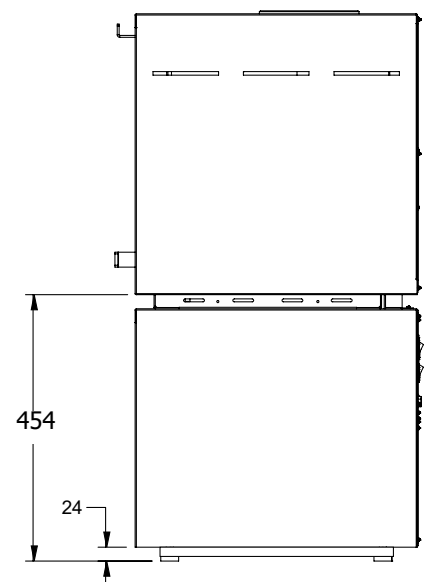
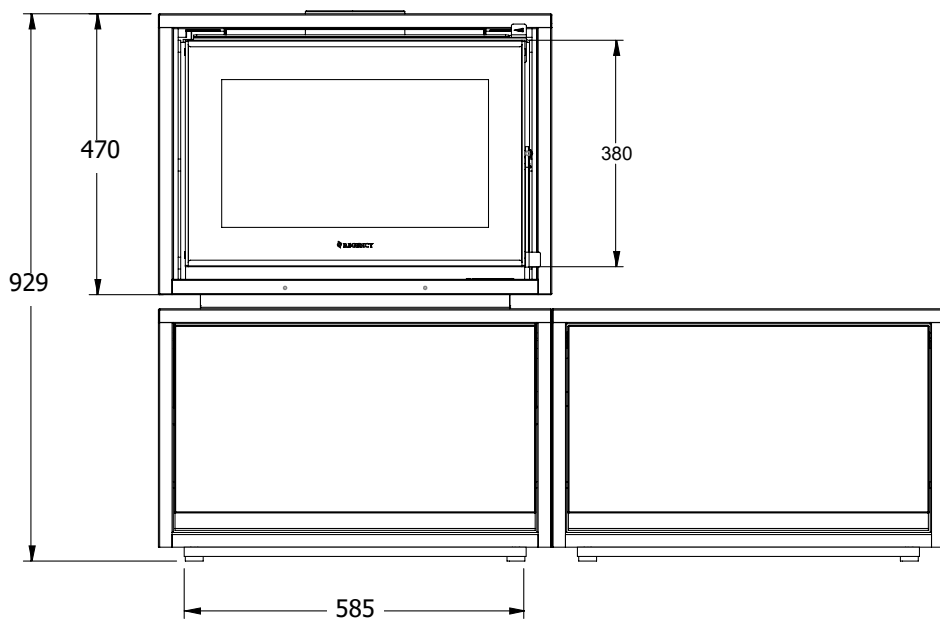
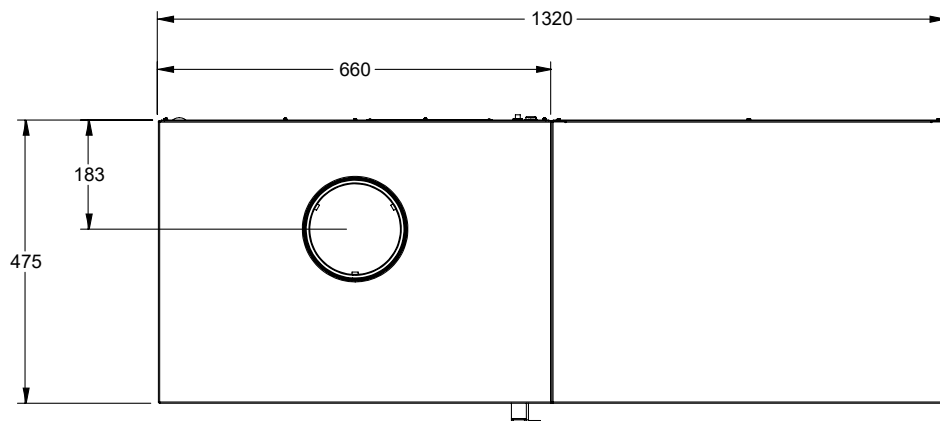


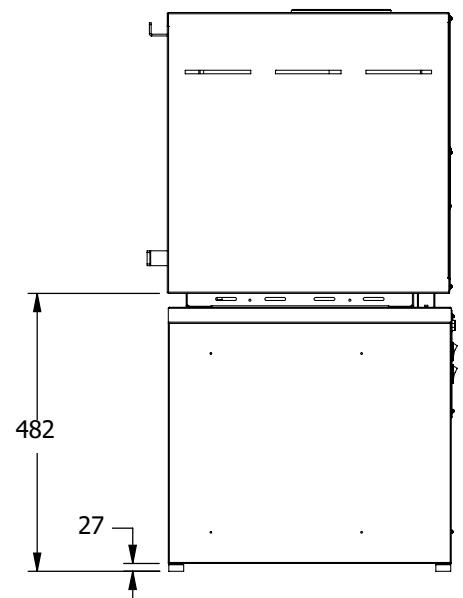
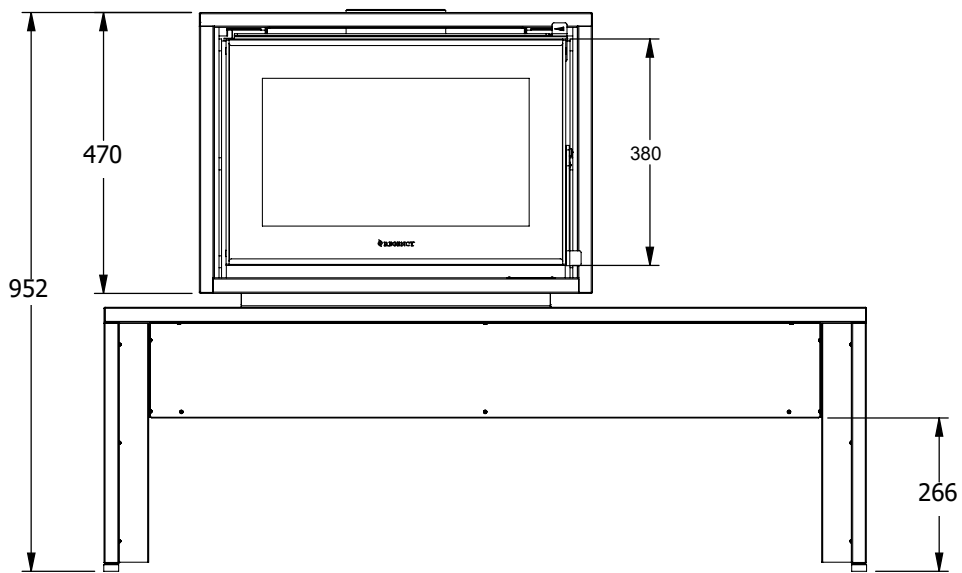
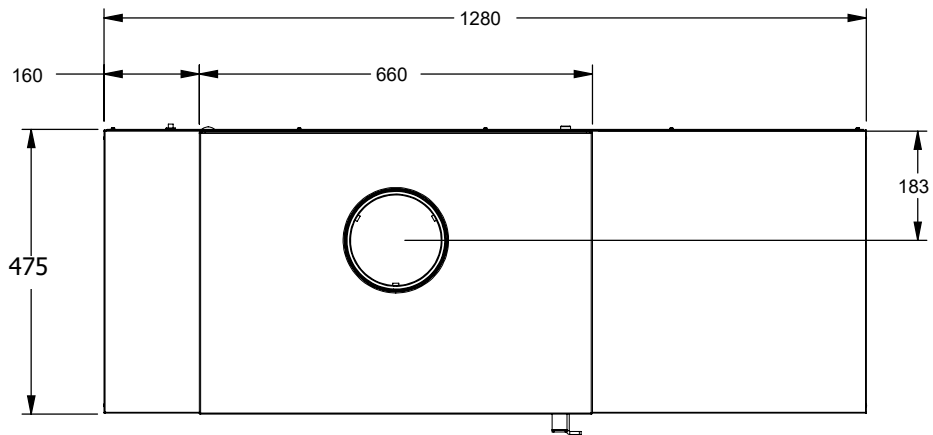
## Bondi F220B-2 Freestanding Wood Fire

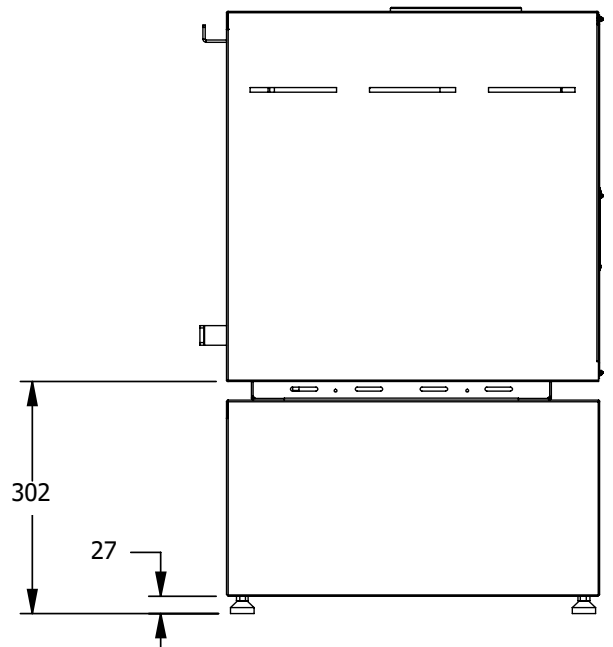
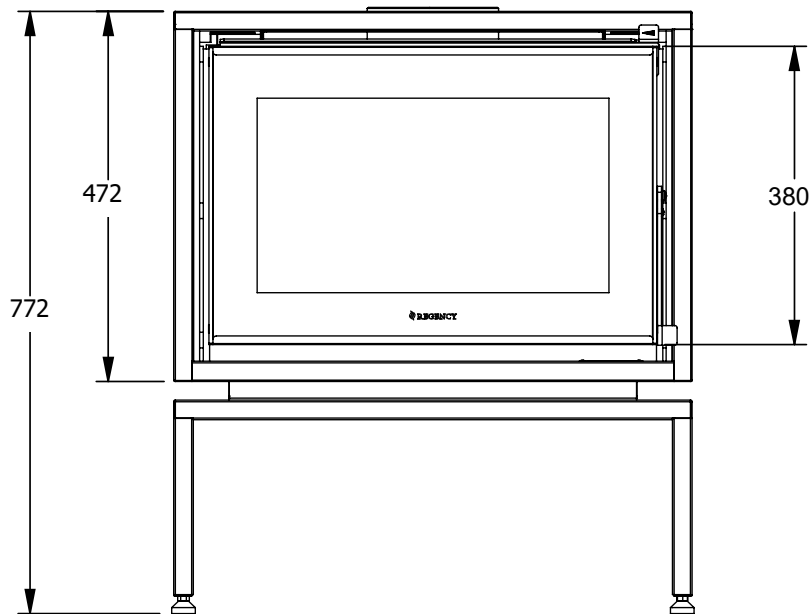
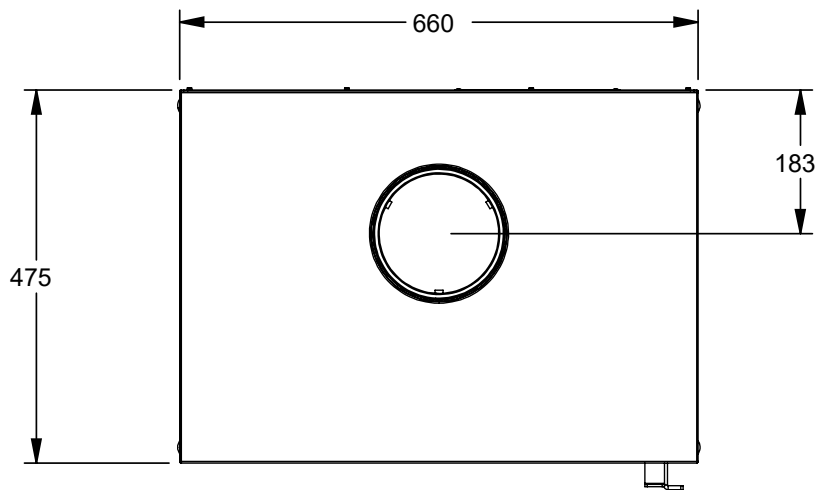
F220B-2	
Flue Size	152 mm
Average Heat Output (kW)	11kW
Efficiency	70%
Heating Capacity	Heats up to 250 sq. m.*
Emissions (grams/kg)	0.5 g/kg.

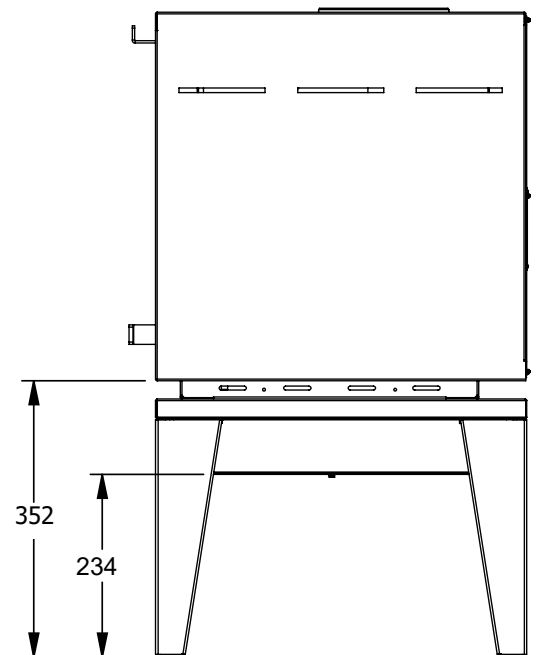
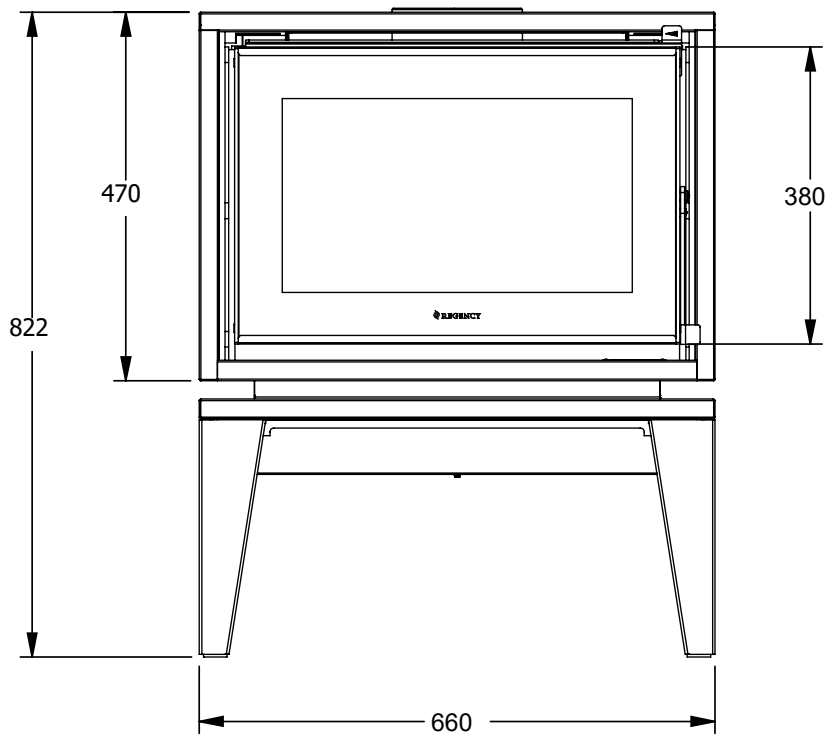
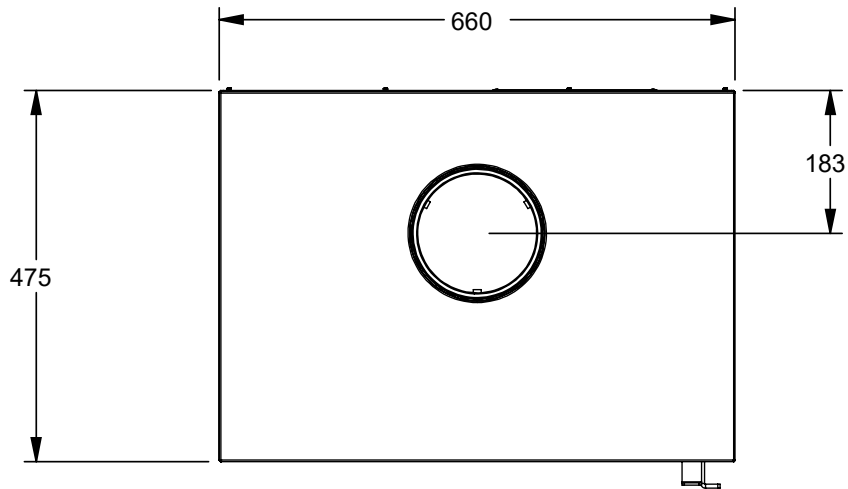
\* Varies depending on home floor plan, house layout, heat loss of the house and quality/moisture content of wood.  
Note : Unit dimensions shown in millimeters.





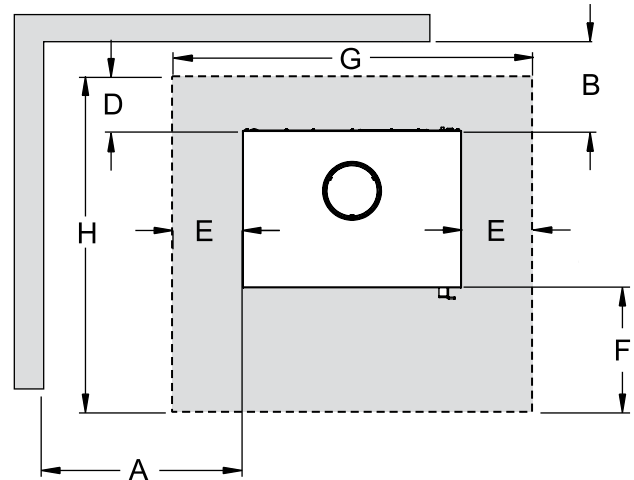






## MINIMUM CLEARANCE TO COMBUSTIBLE MATERIALS BONDI F220B-2

	Triple Skin Mesh Decro	Triple Skin Solid Decro	AHD Special Insulated Flue Kit
A	400mm	400mm	400mm
B	160mm* (1)	160mm	160mm* (2)
C	200mm	200mm	200mm
D	0mm* (3)	0mm* (3)	0mm* (3)
E	110mm	110mm	110mm
F	300mm	300mm	300mm
G	875mm	875mm	875mm
H	775mm	775mm	775mm



### Floor Protection

A combustible floor must be protected by non-combustible material (like tile, concrete board, or as defined by local codes) extending beneath the heater as shown.

From Sides: Dimension (E)  
From Front: Dimension (F)  
From Back Shield: Dimension (D)

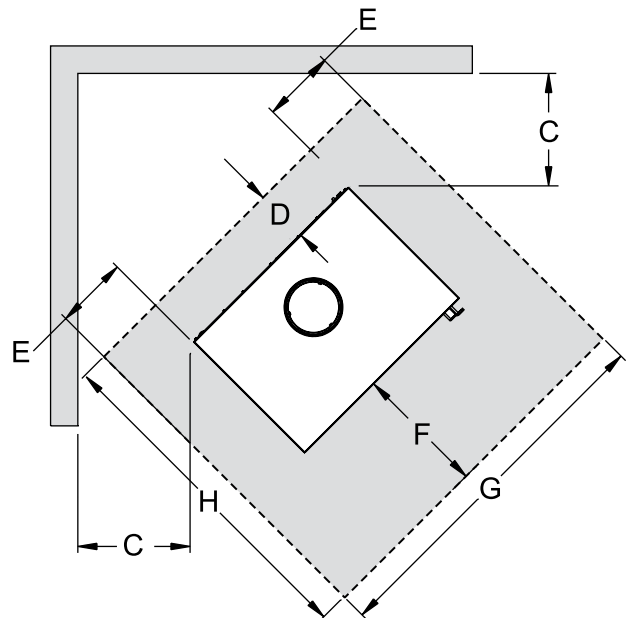
The floor protector should consist of 6mm thick cement fibre sheet which has a thermal resistance of 0.8m<sup>2</sup> k/w for 4mm sheets of cement fibre sheet.

#### IMPORTANT

\* (1) The **Triple Skin mesh flue kit** requires one 180° x 900mm stainless reflective shield between the decromesh casing and active flue. If no shield is fitted rear clearance should be 250mm.

\* (2) The **AHD Special Insulated flue kit** requires one 180° x 900mm stainless reflective to be fitted behind the active flue.

\* (3) Rear **Clearance "D"** is minimum 0mm although for better aesthetics it is recommended to increase to 160mm so as to meet the rear wall - overall hearth depth "H": 935mm



**The flue pipe shall extend not less than 4.6m above the top of the floor protector.**

**NOTE: Installation must be carried out by a licensed installer in accordance with AS/NZS 2918:2018.**

**NOTE:** A minimum clearance of 100mm (flat wall) or 75mm (corner wall) must be retained for all wall surfaces to allow for fan access and maintenance.