

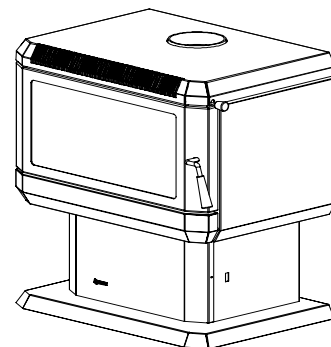
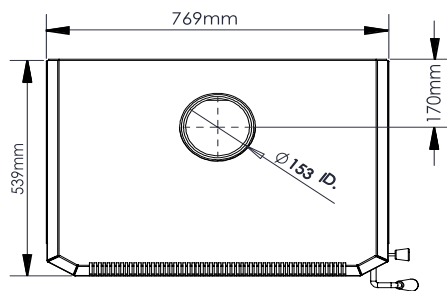
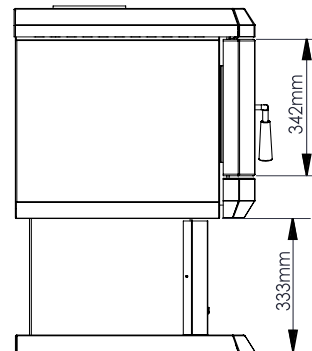
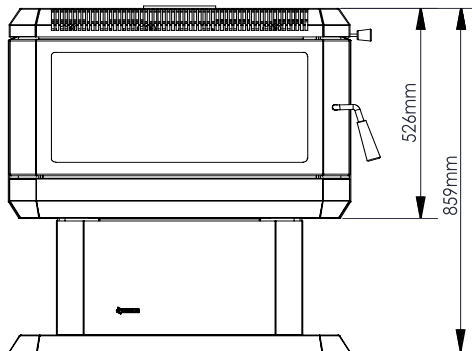
Hume F250B Freestanding Wood Fire

F250B	
Flue Size	152 mm
Efficiency	65%
Average Heat Output (kW)	13kW
Emissions	1.5 g/kg
Heating Capacity	280 - 320 sq.m*

*Varies depending on home floor plan, house layout, heat loss of the house and quality/moisture content of wood.



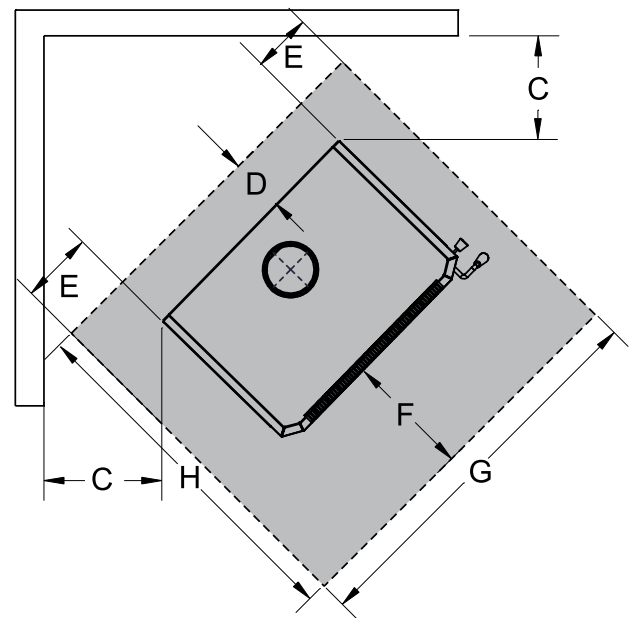
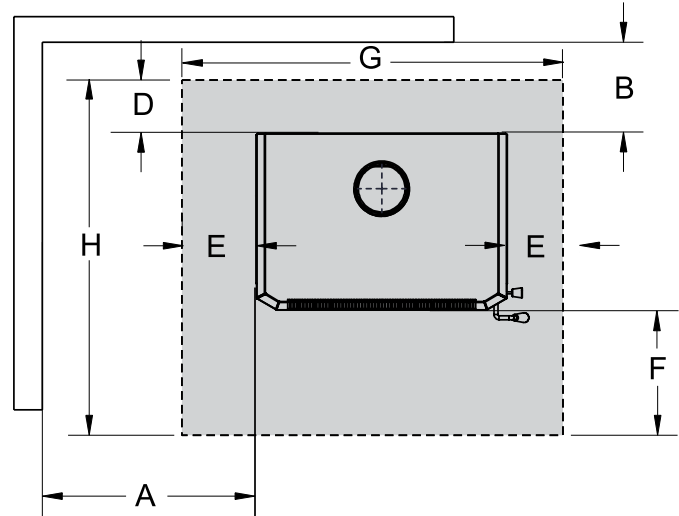
DIMENSIONS



CLEARANCES

Minimum Clearance to Combustible Materials

	Flo-Met Super Single ⁽¹⁾	Hawkwind Standard	AHD Special Insulated ⁽²⁾
A	400 mm	400 mm	450 mm
B	210 mm	180 mm	300 mm
C	200 mm	200 mm	200 mm
D	181 mm	181 mm	181 mm
E	123 mm	123 mm	123 mm
F	400 mm	400 mm	400 mm
G	1015 mm	1015 mm	1015 mm
H	1120 mm	1120 mm	1120 mm



Floor Protection

A combustibile floor must be protected by non-combustible material (like tile, concrete board, or as defined by local codes) extending beneath the heater as follows;

From Sides: 123mm
 From Front: 400mm
 From Back: 181mm

The floor protector should consist of 6mm thick cement fibre sheet which has a thermal resistance of 0.8m² k/w for 4mm sheets of cement fibre sheet.

IMPORTANT

* (1) The Flomet Super Single flue kit must be installed with a 130° x 900mm stainless reflective shield between decromesh.

* (2) The AHD Special Insulated flue kit must be installed with a 40mm air gap around the flue to any combustibile surfaces and the ceiling ring must be spaced as such to provide an air gap of 20mm to the ceiling. The AHD Special Insulated flue kit must be installed with a perforated ceiling plate and 250mm dia. x 195mm high heatshield positioned directly above the ceiling plate.

The flue pipe shall extend not less than 4.6m above the top of the floor protector.

NOTE: Installation must be carried out by a licensed installer in accordance with AS/NZS 2918:2001.

NOTE: A minimum clearance of 180mm (flat wall) or 200mm (corner wall) must be retained for all wall surfaces to allow for fan access and maintenance.