



GRANDVIEW G1200P

LARGE GAS FIREPLACE

NEW
G1200P
Model

regency-fire.com/grandview

YOUR FIREPLACE, YOUR WAY



G1200P shown with driftwood logs, volcanic stones and reflective black glass panels

CHOOSE YOUR LOOK



INTERIOR PANEL

LOG OPTION

MULTIPLE INTERIOR OPTIONS



Birch Log Set

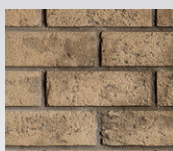


Oak Log Set



Driftwood Log Set

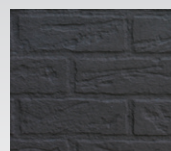
MULTIPLE INTERIOR PANELS



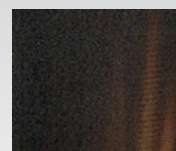
*Rustic Brown
Brick Panels*



*Herringbone - Rustic
Brown Brick Panels*



*Volcanic Black
Brick Panels*



*Black Glass
Reflective Panels*



G1200P shown with birch logs and volcanic black brick panels



G1200P - Oak log set with herringbone brick panels



G1200P - Birch logs with volcanic black brick panels



G1200P - Driftwood logs, volcanic stones and reflective black glass panels

G1200P GAS FIREPLACES

STANDARD FEATURES

- NEW innovative split flow infusion burner that creates the most realistic flame package
- Largest viewing area in its class
- Standard top down and ember-bed lighting
- Integrated Invisimesh safety screen
- Cool Wall system to allow for flexible finishing options
- Flame height adjustment control
- Electronic ignition with Proflame II GTMF remote control
- Natural gas or propane
- Limited lifetime warranty

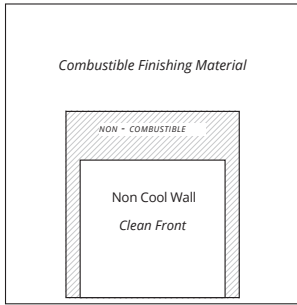
OPTIONS

- Multiple log set choices: oak, birch or driftwood
- Interior panels in Rustic Brown, Volcanic Black, and Herringbone
- Finishing trims for easy finishing around the fireplace
- Variable speed blower (Non-combustible finishing install only)
- Chase vent (cool wall installations)
- Propane conversion kit
- Wi-Fi Kit provides the ultimate fireplace control from your smart phone
- Media kits

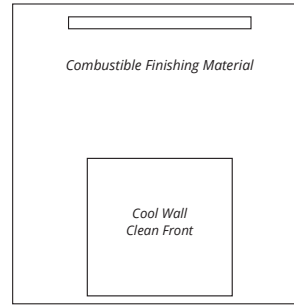
SPECIFICATIONS	NATURAL GAS	PROPANE
Max. Input (BTU)	53,000	53,000
Turn down to (BTU)	13,500	13,500
Efficiency (steady state)	72.58%	74.08%
EnerGuide Rating (Canada only)	66.58%	67.96%

DIMENSIONS	
Width	55"
Height	42-3/4"
Depth	28-7/8"
Glass Viewing Area	1200 sq. in.

SPECIFICATIONS



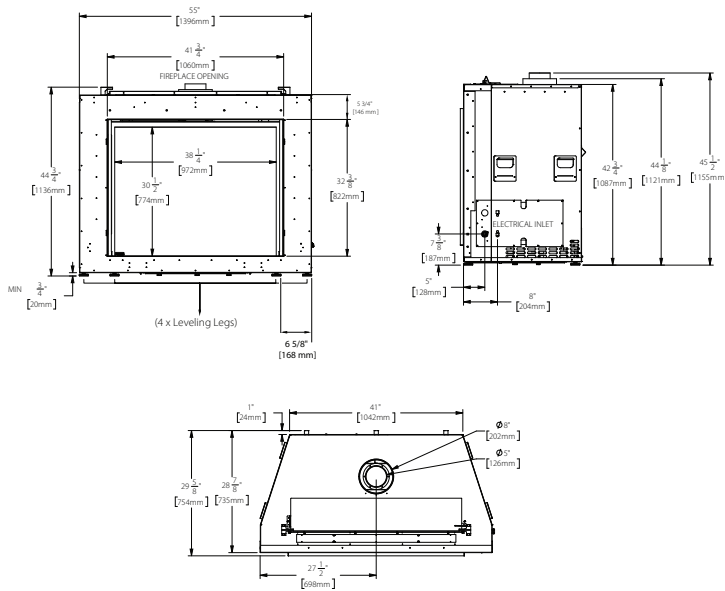
Non-Combustible Finishing Install



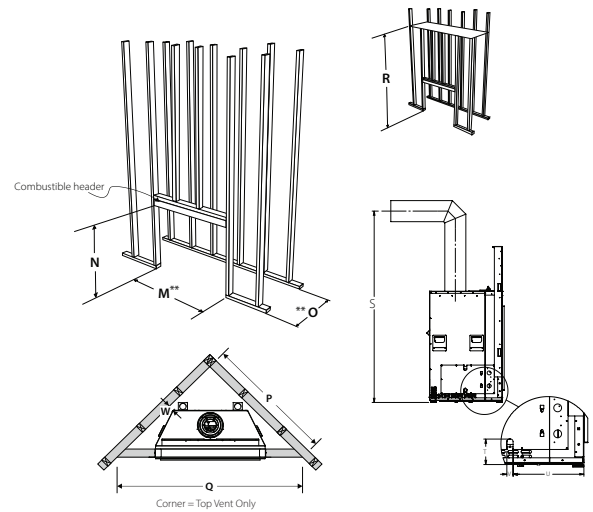
Combustible Finishing Install with Cool Wall

Note: Variable speed blower option is not permitted with Cool Wall Installation.

DIMENSIONS



FRAMING



**The framing depth/width does not take into account dry wall/wood or similar materials against the back/side wall. The framing depth will need to change based on the thickness of the material (example: M - 57-1/4"/1454 mm framing width + 1/2" drywall x 2 Both Sides = 58-1/4"/1479 mm) (example: O - 29"/737 mm framing depth + 1/2" drywall = 29-1/2"/749 mm)

FRAMING		COOL WALL CLEAN FRONT	NON COOL WALL CLEAN FRONT
M	Framing Width	57-1/4"	57-1/4"
N*	Framing Height	51-1/4"	60-1/4"
O	Framing Depth	29"	29"
P	Corner Facing Wall Width	70-1/2"	70-1/2"
Q	Corner Facing Wall Width	99-3/4"	99-3/4"
R	Framed Chase Ceiling Enclosure	88"	96"
S	Vent Centerline Height - Top	75-1/2"	75-1/2"
T	Gas Connection Height	4-7/8"	4-7/8"
U	Gas Connection Inset	13-3/4"	13-3/4"
V	Gas Connection Width	1-1/4"	1-1/4"
W	Clearance to Corner of Unit	1"	1"

* Important: Framing height requires consideration of the hearth depth. Dimension N = N + the thickness of the installed hearth.

OPTIONS	G1200P
Cool Wall Option	Optional
Min. Cool Wall Opening	180 sq. in.
Min. Enclosure Ceiling	88" Cool Wall or 96" non-Cool Wall