



# TRADITIONAL GAS FIREPLACES



[regency-fire.com](https://regency-fire.com)

# WHY CHOOSE REGENCY?

For the past 40+ years Regency has been focused on creating innovative, high-quality, and reliable products that reduce heating costs and add true value to your home. We design all our products to be durable and last a lifetime so that our customers can enjoy them for years to come.

## HIGH-QUALITY

Producing a high-quality product has been at the very heart of what we do from when that very first stove rolled off the production line over 40 years ago to today. We are ever-focused on producing quality products for our customers that will last for years to come.

## BEST WARRANTY

A fireplace should be reliable and should work right the first time it is used, and the 1,000<sup>th</sup>. A core part of our business is making sure that we are building long-lasting, durable, high-quality products; we back-up that commitment with the industry's best warranty on all our products.

## COST-EFFICIENT

Never before have home heating costs been higher. Turn your furnace way down and zone heat with our beautiful, reliable and convenient Regency products. Not only can you cut your fuel bills in half, but you'll be able to enjoy the timeless comfort of a Regency fire.

Why Regency? Because it's *more* than a fireplace!



# TABLE OF CONTENTS

Regency Grandview™ Gas Fireplaces	
<b>G1200P</b>	<b>06</b>
<b>G800P</b>	<b>08</b>
<b>G800EC, G800C, G800EH, G600EC, G600C</b>	<b>10</b>
Regency Bellavista® Gas Fireplaces	
<b>B36XTCE, B36XTE</b>	<b>12</b>
<b>B41XTCE, B41XTE</b>	<b>14</b>
Regency Panorama® Gas Fireplaces	
<b>P36, P36E, P36D</b>	<b>16</b>
<b>P33, P33E, P33CE</b>	<b>18</b>
Regency Excalibur® Gas Fireplace	
<b>P90E</b>	<b>20</b>
Design Choices & Options	<b>22</b>
Specifications	<b>26</b>







# THE GRANDVIEW SERIES

G800P shown with birch log set, herringbone brick panels in black and clean finish install.

## One Fireplace, Unlimited Possibilities

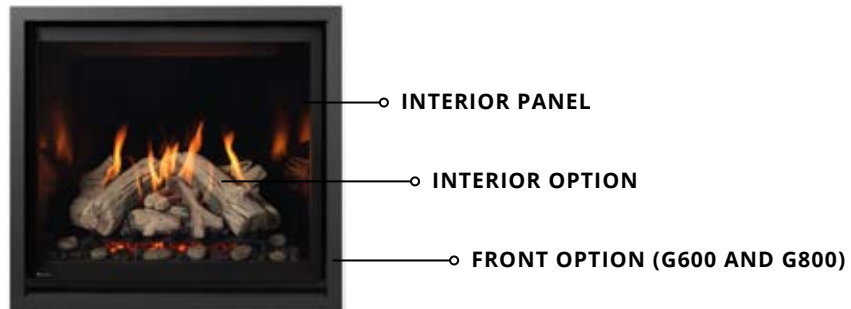
Ignite your imagination with the Regency Grandview™ traditional gas fireplace, offering over 960 design combinations and versatile installation options. Choose a classic setup or opt for our Regency Patented Cool Wall System, which allows safe mounting of art or a TV above the unit while reducing costs and enabling the use of nearly any material right to the edge. With endless styling possibilities and innovative features, the Grandview™ series brings your vision to life with unmatched flexibility.

### COOL WALL SYSTEM ADVANTAGES

- Place a TV above the fireplace without it getting damaged
- Hang artwork without fear of warping
- Paint will not discolor, drywall will not crack
- No internal fans required
- Use any finish right to the edge of the fire, even wood or wallpaper

# OPTIONS & ACCESSORIES FOR GRANDVIEW

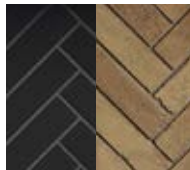
## CHOOSE YOUR LOOK



## MULTIPLE INTERIOR PANELS



Rustic Brown  
Brick Panels



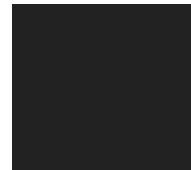
Herringbone - Black  
or Rustic Brown  
Brick Panels



Volcanic Black  
Brick Panels



Castlestone Grey  
(available for G600 &  
G800 series only)



Painted Black  
Steel Panels



Black Enamel or Black  
Glass Reflective Panels

## MULTIPLE INTERIOR OPTIONS



Birch Log Set

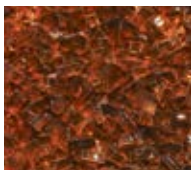


Oak Log Set



Driftwood Log Set

## Available for G600 & G800 Series Only



Crushed Glass -  
Ginger



Crushed Glass -  
Coal Black



Crushed Glass -  
Iceberg



Volcanic Stones

## MULTIPLE FRONT OPTIONS (Available for G600 & G800 Series Only)



Clean Front  
Finishing Trim



Outside  
Finishing Trim



Faceplate

### FACEPLATE AVAILABLE IN THREE COLORS:



Black



Brushed Nickel



Antique Copper



# REGENCY GRANDVIEW™ - G1200P

Extra Large Premium Gas Fireplace



G1200P shown with Oak log set and herringbone brick panels in rustic brown.



Oak log set with herringbone brick panels



Birch logs with volcanic black brick panels



Driftwood logs, volcanic stones and reflective black glass panels

## EXTRA LARGE FLAME PICTURE

Introducing the Regency Grandview™ G1200P — our biggest and most innovative Grandview gas fireplace yet. With cutting-edge Infusion Burner Technology, an impressive panoramic viewing area, and a versatile range of accessories, the G1200P is designed to deliver the ultimate in style, performance, and personalization.

SPECIFICATIONS	NATURAL GAS	PROPANE
Max. Input (BTU)	53,000	53,000
Turn down to (BTU)	13,500	13,500
Efficiency (steady state)	72.58%	74.08%
EnerGuide Rating (Canada only)	66.58%	67.96%

DIMENSIONS	
Viewing Area	1200 sq. in.
Width	55"
Height	42-3/4"
Depth	28-7/8"

For detailed specifications please see page 26.



G1200P shown with Birch logs and volcanic black brick panels.

## STANDARD FEATURES

- NEW innovative split flow infusion burner that creates the most realistic flame package
- Largest viewing area in its class
- Standard top down and ember-bed lighting
- Integrated Invisimesh safety screen
- Cool Wall system to allow for flexible finishing options
- Flame height adjustment control
- Electronic ignition with Proflame II GTMF remote control
- Natural gas or propane
- Limited lifetime warranty

## OPTIONS

- Multiple log set choices: oak, birch or driftwood
- Interior panels in Rustic Brown, Volcanic Black, and Herringbone
- Finishing trims for easy finishing around the fireplace
- Variable speed blower (Non-combustible finishing install only)
- Chase vent (cool wall installations)
- Outdoor Installation kit
- Propane conversion kit
- Power vent kit
- Wi-Fi Kit provides the ultimate fireplace control from your smart phone



# REGENCY GRANDVIEW™ - G800P

Medium Premium Gas Fireplace



G800P shown with Oak log set, rustic brown brick panels and clean finish install.



Birch log set with herringbone brick panels in black



Oak log set with reflective glass black panels



Oak log set, rustic brown brick panels and four sided faceplate in black

## PERSONALIZED WARMTH

Transform your living space with the Regency Grandview™ G800P — the perfect blend of style, comfort, and personalization. With its expansive view, customizable accessories, and beautifully crafted flame, this fireplace creates a cozy, welcoming atmosphere that feels uniquely yours.

SPECIFICATIONS	NATURAL GAS	PROPANE
Max. Input (BTU)	36,000	34,000
Turn down to (BTU)	19,500	27,000
Efficiency (steady state)	65.20%	68.16%
EnerGuide Rating (Canada only)	58.73%	58.89%

DIMENSIONS	
Viewing Area	800 sq. in.
Width	35-7/8"
Height	33-7/8"
Depth	18-5/8"

For detailed specifications please see page 26.





G800P shown with Driftwood log set, reflective glass black panels and four sided black faceplate. Installed on a covered patio using the outdoor installation kit.

## STANDARD FEATURES

- NEW patent pending infusion burner that creates the most realistic flame package
- Clean front design
- Standard top down and ember-bed lighting
- Integrated Invismesh safety screen
- Ceramic glass
- Flame height adjustment control
- Proflame II GTMF remote control
- Electronic ignition
- Natural gas
- Limited lifetime warranty

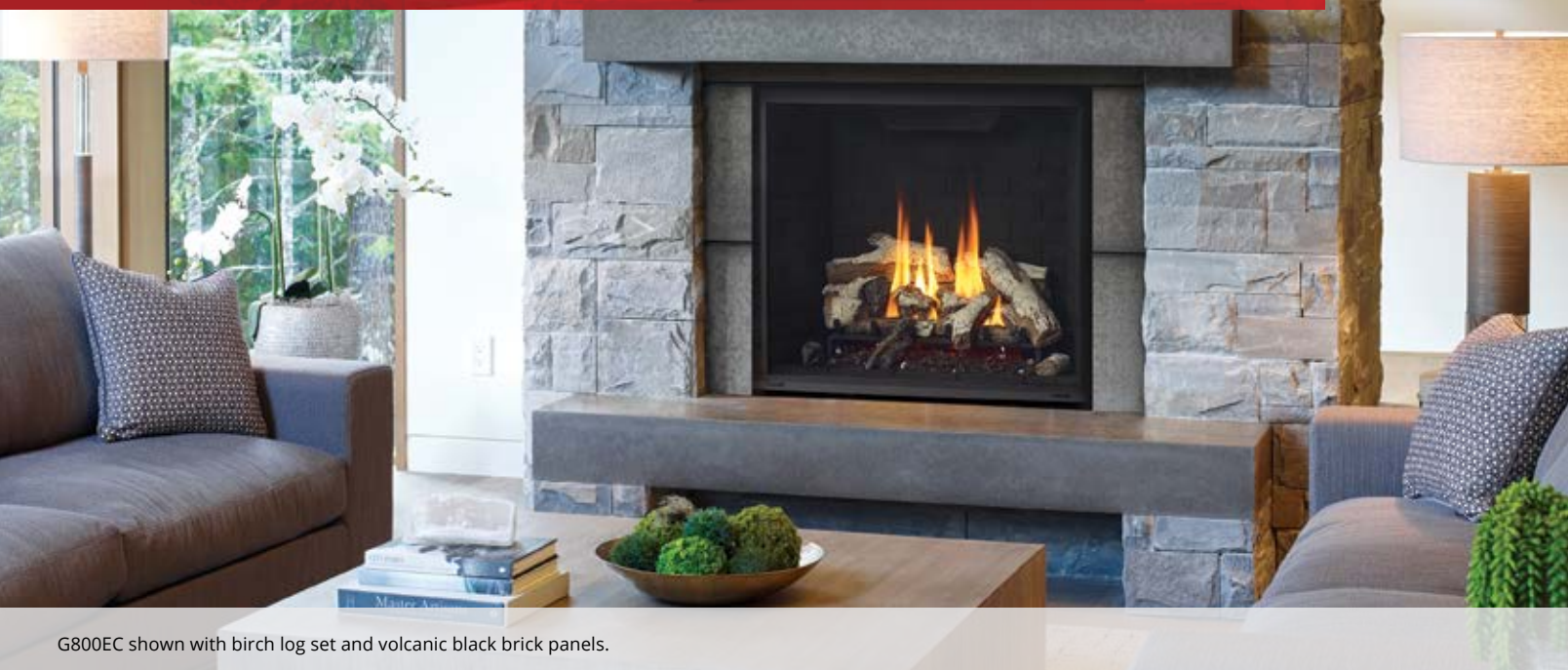
## OPTIONS

- Cool Wall system to allow for any finishing material right to the edge of the fireplace
- Brick panels in a variety of colors and designs
- Inner reflective panels in black glass
- Surrounds in various colors
- Finishing trims for easy finishing around the fireplace
- Variable speed blower
- Chase vent (cool wall installations)
- Outdoor Installation kit
- Propane conversion kit
- Power vent kit
- AstroCap® venting system
- Wi-Fi Kit

# REGENCY GRANDVIEW™

## G800EC • G800C • G800EH • G600EC • G600C

Medium & Small Gas Fireplaces



G800EC shown with birch log set and volcanic black brick panels.



Oak log set and rustic brown brick panels



Oak log set and castlestone brick panels



Birch log set, herringbone brick panels and black faceplate

### REFINED AMBIANCE

Select your breathtaking flame picture and accessories to craft a truly unique fireplace. With our patented Cool Wall technology, create the perfect look for your home with our pick and choose accessory options.

SPECIFICATIONS	G800EC		G800C		G800EH		G600EC		G600C	
	NATURAL GAS	PROPANE	NATURAL GAS	PROPANE	NATURAL GAS	PROPANE	NATURAL GAS	PROPANE	NATURAL GAS	PROPANE
Input (BTU)	27,000	25,500	27,000	26,500	36,000	34,000	21,000	20,500	21,000	20,500
Turn down to (BTU)	15,000	21,000	15,000	14,500	19,500	27,000	11,500	16,500	11,500	11,000
Efficiency (steady state)	65.20%	68.16%	61.12%	63.62%	65.20%	68.16%	71.17%	72.80%	71.18%	72.71%
EnerGuide Rating (Canada only)	55.96%	57.74%	55.96%	55.03%	58.73%	57.94%	64.80%	67.22%	64.79%	66.76%

DIMENSIONS	VIEWING AREA	WIDTH	HEIGHT	DEPTH
G800 series	800 sq. in.	35-7/8"	33-7/8"	16-7/8"
G600 series	600 sq. in.	31-7/8"	29-7/8"	14-5/8"

For detailed specifications please see page 26.





G600C shown with coal black crushed glass and painted black steel panels installed with a clean front finish using the cool wall system and chase vent.



Ginger crushed glass and antique copper faceplate



Iceberg crushed glass, volcanic stones and brushed nickel faceplate



Driftwood log set and black steel panels

## STANDARD FEATURES

- Clean front design
- Top down and ember-bed lighting (G800EC, G800EH, G600EC)
- Integrated safety screen
- Ceramic glass
- Flame height adjustment control
- Standing Pilot (Direct Spark Ignition - G800C, G600C)
- Proflame II GTMF remote control (G800EC, G800EH, G600EC)
- Electronic ignition (G800EC, G800EH, G600EC)
- Rear or top vent for versatile installations
- Natural gas
- Limited lifetime warranty

## OPTIONS

- Choose from a log grate and traditional style log package or contemporary crystal tray
- Cool Wall system to allow for any finishing material right to the edge of the fireplace
- Brick panels in a variety of colors and designs
- Inner reflective panels in black enamel
- Inner painted black steel panels
- Surrounds in various colors
- Finishing trims for easy finishing around the fireplace
- Variable speed blower
- Chase vent (cool wall installations)
- Outdoor Installation kit
- Propane conversion kit
- ON/OFF remote control (G800C, G600C)
- AstroCap® venting system
- Heat Wave™ power duct kit (G800C, G800EC, G800EH)
- Wi-Fi Kit

# REGENCY BELLAVISTA® - B36XTCE • B36XTE

## Medium Gas Fireplaces



B36XTCE shown with rustic brown brick panels and integrated safety screen.

### BOLD STYLE

The B36 Bellevista® combines bold style with reliable performance. Its flush-fit design and edge-to-edge trim options create a clean, modern look. Enjoy up to 31,000 BTUs of heat through ceramic glass, with a 625 sq. in. viewing area that highlights stunning flames and realistic log packages. Built with premium craftsmanship, this fireplace offers easy customization with a variety of accessories—making it a perfect fit for any space.

SPECIFICATIONS	B36XTCE		B36XTE	
	NATURAL GAS	PROPANE	NATURAL GAS	PROPANE
Input (BTU)	31,000	31,000	31,000	31,000
Turn down to (BTU)	21,500	25,000	21,500	25,000
Efficiency (steady state)	70.56%	71.08%	70.56%	71.08%
EnerGuide Rating (Canada only)	65.90%	65.90%	65.90%	65.90%

DIMENSIONS	B36XTCE	B36XTE
Viewing Area	652 sq. in.	652 sq. in.
Width	40-5/8"	36"
Height	38-1/16"	35-1/4"
Depth	23-5/8"	20-7/16"

For detailed specifications please see page 32.





B36XTE shown with Vignette faceplate in platinum, rustic brown brick panels and integrated safety screen.

## STANDARD FEATURES

- Natural gas
- Safety screen
- Ceramic glass
- Log set with embers
- Fire grate
- Flame height adjustment control
- Proflame I GTMF remote control
- Electronic ignition with SureFire™ switch
- Top or rear vent for versatile installations
- Limited lifetime warranty

## OPTIONS

- Brick panels in a variety of colors and designs
- Inner reflective panels in black enamel
- Vignette surrounds in various colors (B36XTE only)
- Vignette door inlays (B36XTE only)
- Vignette finishing trim (B36XTE only)
- Ember upgrade kit
- Wall thermostat
- Variable speed blower
- Vertical or horizontal vent terminations
- AstroCap® venting system
- Propane conversion kit

# REGENCY BELLAVISTA® - B41XTCE • B41XTE

## Large Gas Fireplaces



B41XTCE shown with old town red brick panels and integrated safety screen.

### EXPANSIVE VIEWING AREA

The B41 Bellevista® brings elegance and powerful performance to medium and large spaces. Choose the B41XTCE for a sleek, frameless look or the B41XTE for edge-to-edge trim options that suit any style. A wide viewing area showcases vibrant flames and detailed log sets, delivering up to 42,500 BTUs of comforting heat through safety-tested ceramic glass. With premium craftsmanship and customizable accessories, the B41 Bellevista® is a stunning, versatile centerpiece for any room.

SPECIFICATIONS	B41XTCE		B41XTE	
	NATURAL GAS	PROPANE	NATURAL GAS	PROPANE
Input (BTU)	42,500	37,500	42,500	37,500
Turn down to (BTU)	30,000	29,500	30,000	29,500
Efficiency (steady state)	70.56%	71.08%	72.76%	72.63%
EnerGuide Rating (Canada only)	65.90%	65.90%	68.15%	68.35%

DIMENSIONS	B41XTCE	B41XTE
Viewing Area	840 sq. in.	840 sq. in.
Width	40-5/8"	41-11/16"
Height	36-3/8"	36-11/16"
Depth	25-9/16"	22-3/8"

For detailed specifications please see page 32.





B41XTE shown with Vignette faceplate in Tuscan Sunset, rustic brown brick panels and integrated safety screen.

## STANDARD FEATURES

- Natural gas or propane
- Safety screen
- Ceramic glass
- Log set with embers
- Fire grate
- Flame height adjustment control
- Proflame I GTMF remote control
- Electronic ignition with SureFire™ switch
- Top or rear vent for versatile installations
- Limited lifetime warranty

## OPTIONS

- Brick panels in a variety of colors and designs
- Inner reflective panels in black enamel
- Vignette surrounds in various colors (B41XTE only)
- Vignette door inlays (B41XTE only)
- Vignette finishing trim (B41XTE only)
- Ember upgrade kit
- Wall thermostat
- Variable speed blower
- Vertical or horizontal vent terminations
- AstroCap® venting system

# REGENCY PANORAMA® - P36 • P36E • P36D

## Medium Gas Fireplaces



P36 shown with Vignette faceplate in black, Vignette finishing trim, rustic brown brick panels and integrated safety screen.



Black Louvers and Herringbone brick panels



Vignette faceplate in Tuscan Sunset and Herringbone brick panels



Vignette faceplate in Platinum and rustic brown brick panels

### VERSATILE STYLE

Available in slim or deep box designs, the P36 Panorama® offers versatile style and efficient performance. Ideal for family rooms, dens, or bedrooms, it provides reliable warmth and a cozy atmosphere. With its clean design and customizable features, the P36 is a perfect blend of comfort and elegance for any space in your home.

SPECIFICATIONS	P36		P36E		P36D	
	NATURAL GAS	PROPANE	NATURAL GAS	PROPANE	NATURAL GAS	PROPANE
Input (BTU)	30,000	30,000	29,500	28,500	30,000	30,000
Turn down to (BTU)	15,500	15,500	19,500	22,000	15,500	15,500
Efficiency (steady state)	70.55%	70.55%	72.88%	74.40%	71.26%	71.26%
EnerGuide Rating (Canada only)	n/a	n/a	66.86%	67.44%	n/a	n/a

DIMENSIONS	
Viewing Area	451 sq. in.
Width	36"
Height	30-1/2"
Depth	P36/P36E - 12-3/4" P36D - 17-1/8"

For detailed specifications please see page 31.





P36 shown with Vignette faceplate in black, Vignette finishing trim, rustic brown brick panels and integrated safety screen.



Vignette Faceplate in Black, Vignette Door Inlay in Black and Herringbone brick panels



Vignette Faceplate in Black, Vignette Door Inlay in Black Chrome and rustic brown brick panels



Vignette Faceplate in Black, Vignette Door Inlay in Tuscan Sunset and Herringbone brick panels

## STANDARD FEATURES

- Natural gas
- Safety screen
- Ceramic glass
- Log set with embers
- Fire grate
- Flame height adjustment control
- Proflame GTMF remote control
- Electronic ignition (P36E)
- Standing Pilot (Direct spark ignition - P36/P36D, available in USA only)
- Limited lifetime warranty

## OPTIONS

- Vignette surrounds in various colors
- Vignette door inlays
- Vignette finishing trim
- Brick panels in a variety of colors and designs
- Inner reflective panels in black enamel
- Ember upgrade kit
- Black louvers & mesh guard
- Variable speed blower
- Wall thermostat
- Propane conversion kit
- Vertical or horizontal vent terminations
- Heat Wave™ power duct kit
- AstroCap® venting system

# REGENCY PANORAMA® - P33 • P33E • P33CE

## Small Gas Fireplaces



P33 shown with Vignette faceplate in black, Vignette finishing trim, Vignette door inlay in black, rustic brown brick panels and integrated safety screen.



P33/P33E Black Louvers and Herringbone brick panels



P33/P33E - Vignette Faceplate in Tuscan Sunset and Herringbone brick panels



P33/P33E - Vignette Faceplate in Platinum and rustic brown brick panels

### COMPACT DESIGN

The P33 Panorama® offers a true flush finish for an unobstructed view of its bold, dynamic flames—perfect for small to medium-sized spaces. This fireplace is a complete visual experience, featuring a hand-crafted ceramic log set and glowing embers. With its seamless design and radiant ambiance, the P33 becomes an inviting centerpiece in any room.

SPECIFICATIONS	P33		P33E		P33CE	
	NATURAL GAS	PROPANE	NATURAL GAS	PROPANE	NATURAL GAS	PROPANE
Input (BTU)	20,000	19,500	20,000	19,500	20,000	19,500
Turn down to (BTU)	14,000	15,500	14,000	15,500	14,000	15,500
Efficiency (steady state)	72.57%	74.06%	68.28%	73.82%	68.28%	73.82%
EnerGuide Rating (Canada only)	n/a	n/a	66.49%	69.44%	66.49%	69.44%

DIMENSIONS	
Viewing Area	416 sq.in.
Width	33"
Height	P33/P33E - 29" P33CE - 29-1/4"
Depth	P33/P33E - 12-3/4" P33CE - 16"

For detailed specifications please see page 31.





P33CE shown with oak log set.



P33 - Vignette Faceplate in Black, Vignette Door Inlay in Black and rustic brown brick panels



P33CE - Oak log set and herringbone brick panels



P33CE - Birch log set and Inner black enamel reflective panels

## STANDARD FEATURES

- Natural gas
- Safety screen
- Ceramic glass
- Log set with embers
- Fire grate
- Flame height adjustment control
- Proflame I GTMF remote control
- Direct spark ignition (P33, available in USA only)
- Electronic ignition (P33E/P33CE)
- 45° flue for versatile installations
- Limited lifetime warranty

## OPTIONS

- Vignette surrounds in various colors (P33/P33E)
- Vignette door inlays (P33/P33E)
- Vignette finishing trim (P33/P33E)
- Black louvers (P33/P33E)
- Brick panels in various colors and designs
- Inner reflective panels in black enamel
- Ember upgrade kit
- Wall thermostat
- Variable speed blower
- Vertical or horizontal vent terminations
- Propane conversion kit
- Heat Wave™ power duct kit
- AstroCap® venting system
- 3-sided finishing trim (when using black louvers - (P33/P33E))

# REGENCY EXCALIBUR® P90E

## Medium Gas Fireplace



P90E shown with herringbone brick panels and double door inlay with integrated safety screen.

### TIMELESS ARCH DESIGN

The Regency Excalibur® P90E features a graceful arched design that frames radiant flames with timeless elegance. Its glowing embers and hand-crafted split logs create the look and feel of a real wood-burning fire. With over 40 customization options, you can tailor every detail to match your style—making the P90E a truly personal and luxurious fireplace experience.

### STANDARD FEATURES

- Natural gas
- Ceramic glass
- Log set with embers
- Fire grate
- Black brick panel floor
- Variable speed blower
- Proflame II GTMF remote control
- Electronic Ignition
- Flame height adjustment control
- Limited lifetime warranty

### OPTIONS

- Arch surround in black with integrated safety screen
- Brick panels in various colors and designs
- Double door inlay
- Wall thermostat
- Propane conversion kit
- Heat Wave™ power duct kit
- AstroCap® venting system
- Steel stud framing kit

SPECIFICATIONS	NATURAL GAS	PROPANE
Input (BTU)	35,000	31,500
Turn down to (BTU)	23,500	25,500
Efficiency (steady state)	76.07%	76.07%
EnerGuide Rating (Canada only)	71.36%	72.79%

DIMENSIONS	
Viewing Area	455 sq. in.
Width	37"
Height	29-1/4"
Depth	19-1/4"

For detailed specifications please see page 31.



# FIREPLACE OPTIONS

## MAXIMIZING COMFORT AND EFFICIENCY

Regency fireplaces deliver controllable heating solutions by combining the latest in radiant/convection heat technology and innovative features:

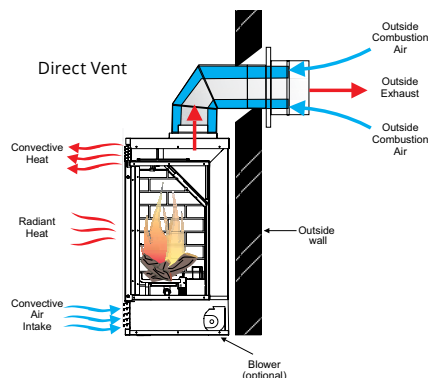
- Adjustable flame/heat control.
- Heat radiating ceramic glass.
- **Intelligent Ignition System** features fuel-saving intermittent pilot ignition (IPI), 7-day continuous pilot mode (CPI), and 5 second **Flame Failure Response Time (FFRT)** for more reliable startups - even in cold weather (Electronic Ignition Models Only).
- Power's Out, Heat's On. All Regency gas fireplaces operate without electricity. Enjoy peace of mind all winter long.
- Variable speed blower to maximize efficiency. Our **quiet blowers** increase the efficiency of your fireplace by pushing the heat produced by your fireplace forward and distributing it throughout the room.
- **Proflame GTMF Remote Controls**. A standard feature included with most traditional gas fireplaces, this user friendly programmable remote can be set to start your Regency fire at your desired room temperature and be easily adjusted with the touch of a button.

## COOL WALL SYSTEM

Our patented Cool Wall System utilizes natural convection and innovative design to maintain cool wall surface temperatures without any loss in efficiency or need for fans or additional ducting. The fireplace draws in cooler air from floor level, heating and then distributing the air both in front of the fireplace and at ceiling level, enabling total flexibility in finishing materials and placement of televisions and artwork.

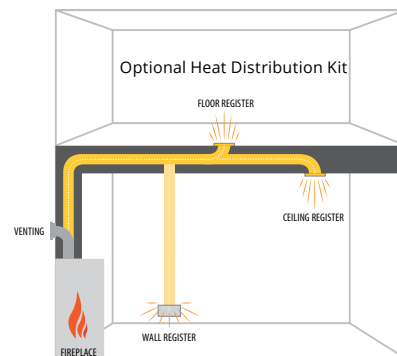


## NO CHIMNEY? NO PROBLEM!



**DIRECT VENT TECHNOLOGY** allows you to add a fireplace to rooms with no existing chimney. Simply vent your fireplace through an outside wall and finish it with the patented **Regency AstroCap Flex Venting System**. Direct Vent fireplaces are airtight systems that use outside air for combustion, helping maintain indoor air quality and keeping all the warmth generated from your fireplace inside your home. Even when the fireplace is turned off, the sealed system will prevent cold air from entering the home and warm air from leaving. Direct Vent fireplaces allow versatility in **installation and increase fireplace efficiency**.

## SPREAD THE WARMTH



**ZONE HEATING WITH REGENCY:** Add a fireplace to your most frequently used living space and save energy by only heating rooms you use.

**HEAT ADJACENT ROOMS WITH THE HEAT WAVE™ - POWER DUCT SYSTEM:** Cut down on your heating costs using a Heat Wave kit. The Heat Wave system attaches onto most Regency gas fireplaces allowing you to direct heat into rooms up to 20 feet away. This kit comes complete with vent, variable speed blower (for Heat Wave system only) and vent register.

# DESIGN OPTIONS

## UNIT SIZE COMPARISON



P33CE



P33/P33E



P36/P36E/P36D



G600EC/G600C



G800EC/G800C



G800P



B36XTCE



B36XTE



B41XTCE



B41XTE



G1200P



# DESIGN OPTIONS

## INNER PANEL OPTIONS (NOT AVAILABLE ON ALL MODELS)



Herringbone -  
Rustic Brown



Standard -  
Rustic Brown



Standard -  
Old Town Red



Standard - Charcoal



Castlestone Brown  
(Available for B36 &  
B41 Bellavista models)



Castlestone Grey  
(Available for G600 &  
G800 models)



Black Enamel Panels



Ember Upgrade Package

## VIGNETTE FACEPLATE OR LOUVERED OPTIONS

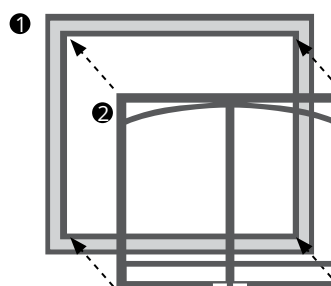
FOR UNITS: P33, P33E, P36, P36E, P36D, B36XTE, B41XTE

### VIGNETTE FACEPLATES & DOOR INLAY



Shown with black Vignette Faceplate,  
Tuscan Sunset Door Inlay & Vignette finishing trim

- ① Vignette Faceplate
- ② Vignette Inlay



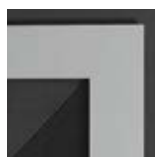
### VIGNETTE FACEPLATES & INLAYS FINISHES



Black



Black Chrome



Platinum  
(Not available for inlays)



Tuscan Sunset

## LOUVERS



Black Louvers  
For units: P33/P33E/P36/P36E/P36D



Flush Panels  
For units: B36XTE/B41XTE

# ACCESSORY OPTIONS

## GRANDVIEW UNITS (G1200P, G800P, G800EC, G800EH, G800C, G600EC, G600C)

ACCESSORIES		G1200P ELECTRONIC IGNITION	G800P ELECTRONIC IGNITION	G800EC • G600EC ELECTRONIC IGNITION	G800EH ELECTRONIC IGNITION	G800C • G600C STANDING PILOT
Cool Wall Installation		★	★	★	★	★
Safety Screen		✓	✓	✓	✓	✓
Ceramic Glass		✓	✓	✓	✓	✓
Proflame II Remote Control		✓	✓	✓	•	•
On/Off Remote		•	•	•	•	★
Accent & Ember-bed Lights		✓	✓	✓	✓	•
Inner Panels	Black	★	★	★	★	★
	Standard - Volcanic Black	★	★	★	★	★
	Standard - Rustic Brown	★	★	★	★	★
	Castlestone	•	•	★	★	★
	Herringbone - Rustic Brown	★	★	★	★	★
	Herringbone - Black	★	★	★	★	★
	Black Enamel	•	★	★	★	★
	Black Glass	★	★	•	•	•
Faceplates	Black	•	★	★	★	★
	Brushed Nickel	•	★	★	★	★
	Antique Copper	•	★	★	★	★
Finishing Trims	Clean Front	★	★	★	★	★
	Outside Finish	•	•	★	★	★
Media	Driftwood Logs	★	★	★	★	★
	Birch Logs	★	★	★	★	★
	Oak Logs	★	★	★	★	★
	Crushed Glass (Various Colors)	•	•	★	★	★
Blower (with Fan Speed Control)		★	★	★	★	★
Outdoor Installation Kit		★	★	★	★	★
Power Vent Kit		★	★	★	★	★
WiFi Kit		★	★	•	•	•
Propane Conversion Kit		★	★	★	★	★

• Not available    ✓ Standard    ★ Optional

## REMOTES & THERMOSTATS



Proflame I GTMF  
Remote Control



Proflame II GTMF  
Remote Control



Wall Mount



Programmable  
Thermostat

FEATURE	DESCRIPTION	PROFLAME GTMF OR WALL MOUNT	PROGRAMMABLE THERMOSTAT
On/Off		✓	✓
Child lock		✓	•
LCD Backlit Screen		✓	✓
Clock		•	✓
Temperature display	°F / °C	✓	✓
	one setting (all days)	✓	✓
	5-day weekday & 2-day weekend	•	✓
Smart thermostat*		✓	•
Flame adjustment	(6 levels)	✓	•
Fan control**	(6 levels)	✓	•
Accent light (On/Off)***		✓	•

\* Smart Thermostat - Rather than a thermostat that simply turns your fireplace on and off, the Smart Control function allows you to set your desired room temperature. As the room reaches your personal setting the flame intensity and heat will gradually decrease - keeping the ambience of your Regency fire on with less heat output with the option to turn off at any time.

\*\* For models that have a blower.    \*\*\* For models that have an optional accent light.



# ACCESSORY OPTIONS

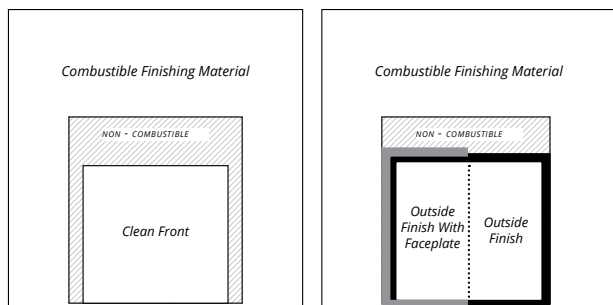
ACCESSORIES - AT A GLANCE			B41XTCE	B41XTE	B36XTCE	B36XTE	P90E	P36/ P36D	P36E	P33CE	P33E	P33
Clean front		Glass	✓	•	✓	•	•	•	•	✓	•	•
Faceplates	Vignette	Black	•	★	•	★	•	★	★	•	★	★
		Black Chrome	•	★	•	★	•	★	★	•	★	★
		Platinum	•	★	•	★	•	★	★	•	★	★
		Tuscan Sunset	•	★	•	★	•	★	★	•	★	★
	Vignette Door Inlay	Black	•	★	•	★	•	★	★	•	★	★
		Black Chrome	•	★	•	★	•	★	★	•	★	★
		Tuscan Sunset	•	★	•	★	•	★	★	•	★	★
	Vignette Finishing trim		•	★	•	★	•	★	★	•	★	★
Excalibur Arch Surrounds	Surround	Black	•	•	•	•	★	•	•	•	•	•
	Door Inlay	Black	•	•	•	•	★	•	•	•	•	•
Classic look	Louvers	Black	•	•	•	•	•	★	★	•	★	★
	Flush panels	Black	•	★	•	★	•	•	•	•	•	•
	Finishing Trim	Black	•	★	•	★	•	★	★	•	★	★
Inner panels	Bricks	Standard - Rustic Brown	★	★	★	★	★	★	★	★	★	★
		Standard - Old Town Red	★	★	★	★	★	★	★	★	★	★
		Standard - Charcoal	★	★	•	★	•	•	•	•	•	•
		Herringbone - Rustic Brown	•	•	•	•	★	★	★	★	★	★
		Castlestone	★	★	★	★	•	•	•	•	•	•
	Reflective	Black enamel	★	★	★	★	•	★	★	★	★	★
Safety Screen (included with unit or faceplate)			✓	✓	✓	✓	✓	✓	✓	✓	✓	✓
Ember upgrade package			★	★	★	★	★	★	★	★	★	★
Blower (with fan speed controller)			★	★	★	★	✓	★	★	★	★	★
Controls	Programmable Thermostat		★	★	★	★	★	★	★	★	★	★
	Proflame GTMF Remote Control		✓	✓	✓	✓	✓	✓	✓	✓	✓	✓
Venting	Direct vent		✓	✓	✓	✓	✓	✓	✓	✓	✓	✓
	AstroCap® Venting System		★	★	★	★	★	★	★	★	★	★
	Heat Wave™ Power Duct System		•	•	•	•	★	★	★	★	★	★
Propane conversion kit			•	•	★	★	★	★	★	★	★	★

- Not available
- ✓ Standard
- ★ Optional

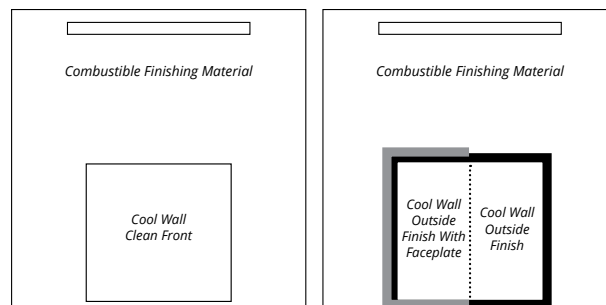
# SPECIFICATIONS

## INSTALLATION OPTIONS - G1200P, G800P, G800EH, G800EC, G800C

### Non-Combustible Finishing Install

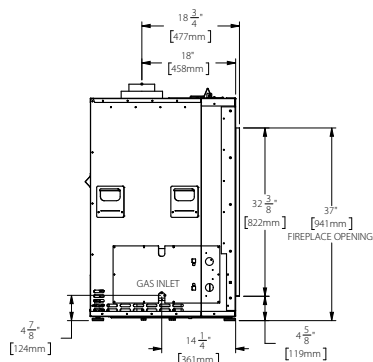
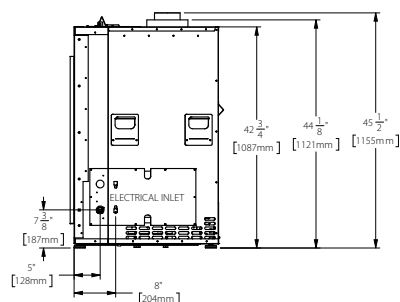
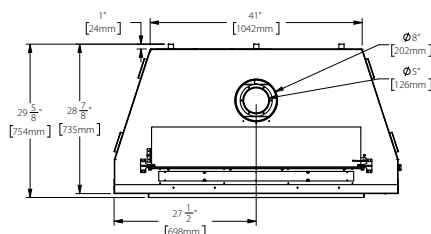
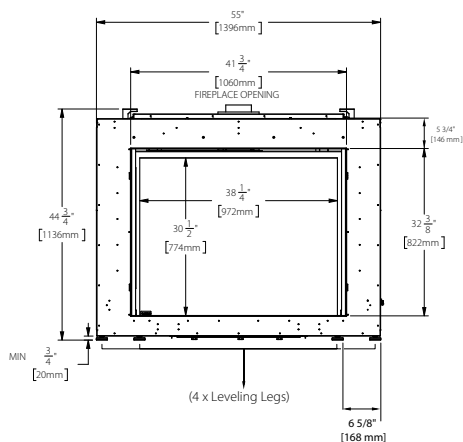


### Combustible Finishing Install with Cool Wall



OPTIONS	G800EC	G800C	G800EH	G800P	G1200P
Cool Wall Option	Optional	Optional	Optional	Optional	Optional
Min. Cool Wall Opening	66 sq. in.	66 sq. in.	107 sq. in.	107 sq. in.	180 sq. in.
Min. Enclosure Ceiling	80" Cool Wall or 62" non-Cool Wall	80" Cool Wall or 62" non-Cool Wall	82" Cool Wall or 84" non-Cool Wall	72" Cool Wall or 62" non-Cool Wall	88" Cool Wall or 96" non-Cool Wall

## DIMENSIONS - G1200P



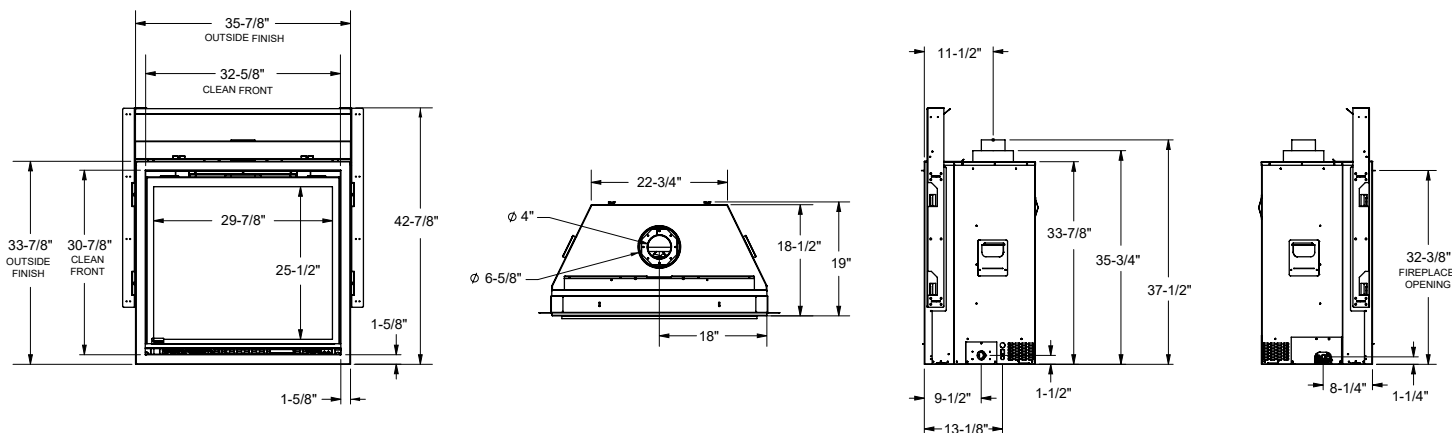
**For installation, framing and clearances see manuals on our website: [www.regency-fire.com](http://www.regency-fire.com)**

NOTE: All product specifications are subject to change without notice. Before installing refer to the relevant product manual for full and up-to-date information.

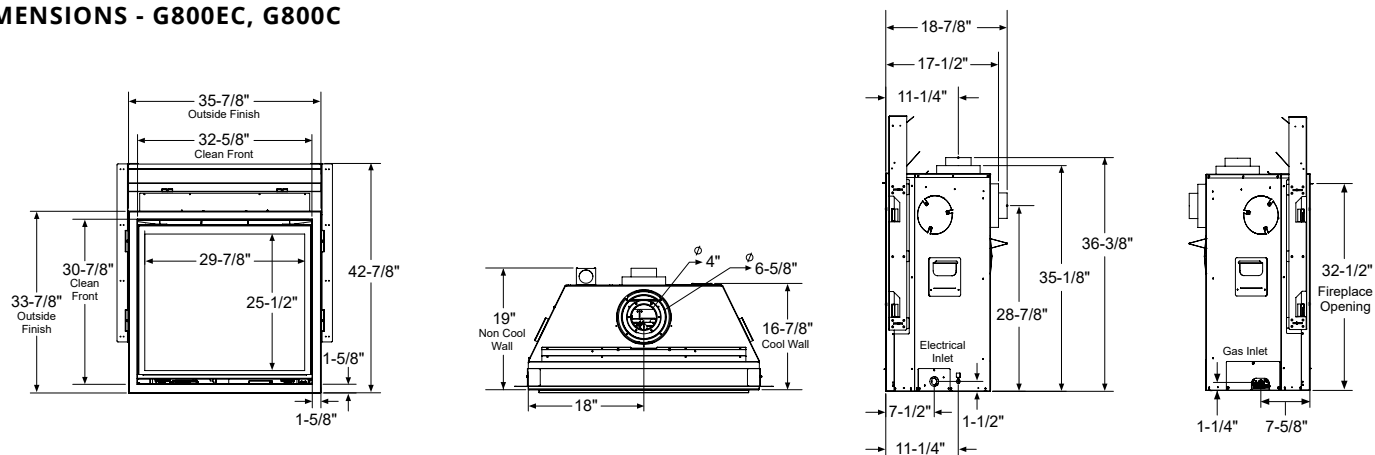


# SPECIFICATIONS

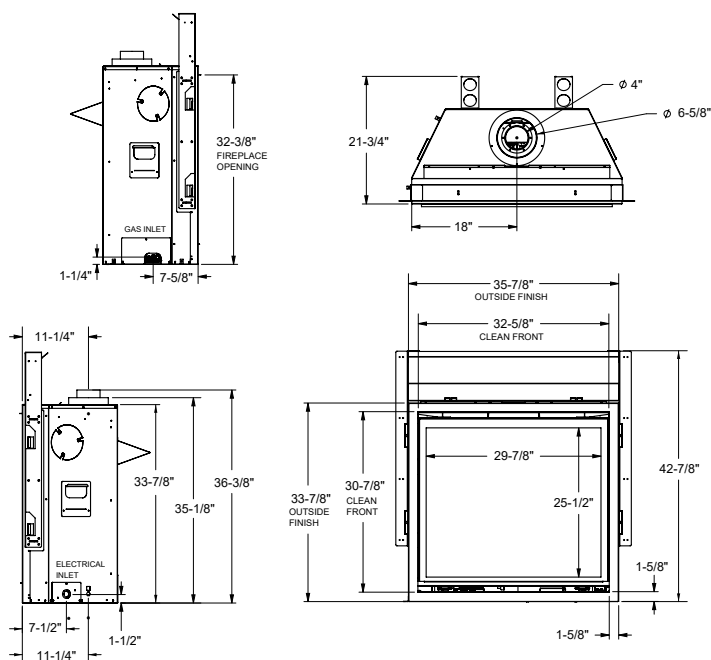
## DIMENSIONS - G800P



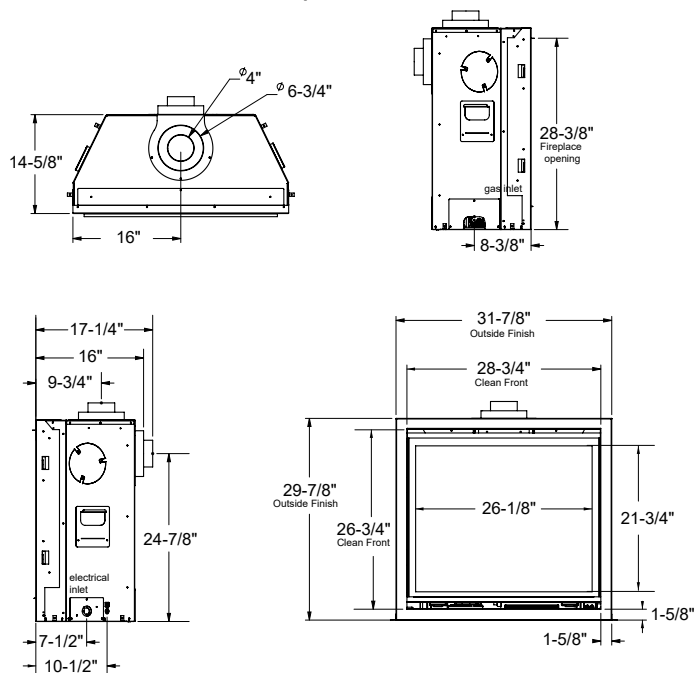
## DIMENSIONS - G800EC, G800C



## DIMENSIONS - G800EH

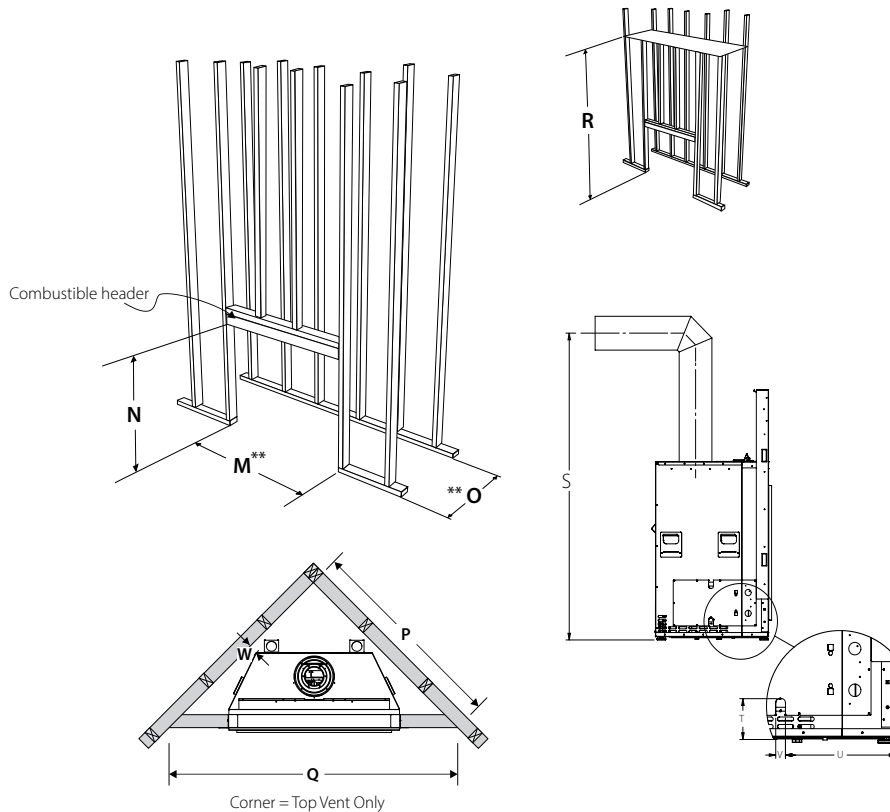


## DIMENSIONS - G600EC, G600C



# SPECIFICATIONS

## FRAMING - G1200P



\*\*The framing depth/width does not take into account dry wall/wood or similar materials against the back /side wall.  
The framing depth will need to change based on the thickness of the material  
(example: M - 57-1/4"/1454 mm framing width + 1/2" drywall x 2 Both Sides = 58-1/4"/1479 mm)  
(example: O - 29"/737 mm framing depth + 1/2" drywall = 29-1/2"/749 mm)

## FRAMING - G1200P

FRAMING		COOL WALL CLEAN FRONT	NON COOL WALL CLEAN FRONT
M	Framing Width	57-1/4"	57-1/4"
N*	Framing Height	51-1/4"	60-1/4"
O	Framing Depth	29"	29"
P	Corner Facing Wall Width	70-1/2"	70-1/2"
Q	Corner Facing Wall Width	99-3/4"	99-3/4"
R	Framed Chase Ceiling Enclosure	88"	96"
S	Vent Centerline Height - Top	75-1/2"	75-1/2"
T	Gas Connection Height	4-7/8"	4-7/8"
U	Gas Connection Inset	13-3/4"	13-3/4"
V	Gas Connection Width	1-1/4"	1-1/4"
W	Clearance to Corner of Unit	1"	1"
* Important: Framing height requires consideration of the hearth depth. Dimension N = N + the thickness of the installed hearth.			

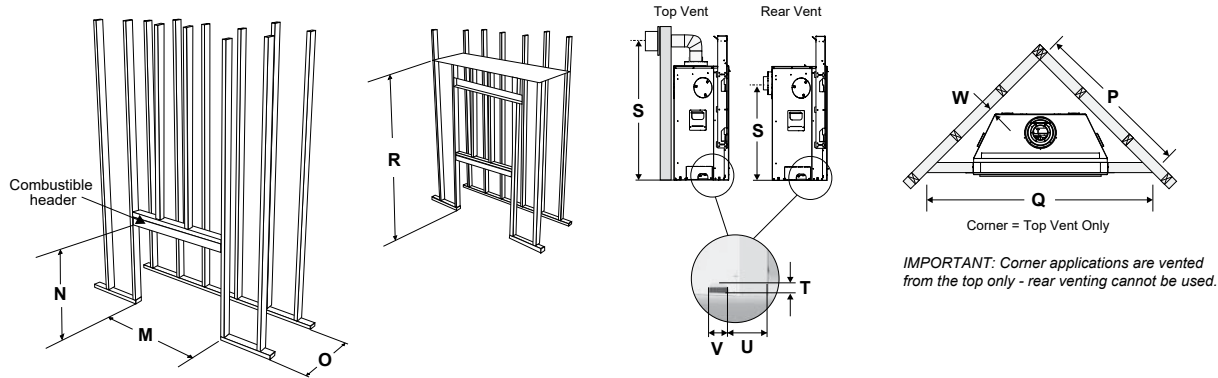
OPTIONS	G1200P
Cool Wall Option	Optional
Min. Cool Wall Opening	180 sq. in.
Min. Enclosure Ceiling	88" Cool Wall or 96" non-Cool Wall

**For installation, framing and clearances see manuals on our website: [www.regency-fire.com](http://www.regency-fire.com)**

NOTE: All product specifications are subject to change without notice. Before installing refer to the relevant product manual for full and up-to-date information.



# SPECIFICATIONS



## FRAMING - G800P

FRAMING	COOL WALL	CLEAN FRONT	OUTSIDE FINISH
M Framing Width	37-1/2"	37-1/2"	37-1/2"
N* Framing Height	43"	49-1/4"	49-1/4"
O Framing Depth	19"	20"	20"
P Corner Facing Wall Width	43"	44-3/8"	44-3/8"
Q Corner Facing Wall Width	60-7/8"	62-7/8"	62-7/8"
R Framed Chase Ceiling Enclosure	72"	62"	62"
S Vent Centerline Height - Top	44-1/2"	44-1/2"	44-1/2"
T Gas Connection Height	1-1/2"	1-1/2"	1-1/2"
U Gas Connection Inset	6-3/8"	6-3/8"	6-3/8"
V Gas Connection Width	3"	3"	3"
W Clearance to Corner of Unit	1-1/2"	1"	1"
Non-combustible Material Required Above Appliance	Not Required	17-1/2"	16"

\* Important: Framing height requires consideration of the hearth depth. Dimension N = N + the thickness of the installed hearth.

## FRAMING - G800EC, G800C

FRAMING	COOL WALL	CLEAN FRONT	OUTSIDE FINISH
M Framing Width	36-1/2"	37-1/2"	36-1/2"
N* Framing Height	43"	43"	43"
O Framing Depth	16-7/8"	19-1/4"***	19-1/4"***
P Corner Facing Wall Width	42-1/2"	61-1/4"***	46-1/2"***
Q Corner Facing Wall Width	60"	86-5/8"	65-3/4"
R Framed Chase Ceiling Enclosure	80"	62"	62"
S Vent Centerline Height - Rear	29"	29"	29"
S Vent Centerline Height - Top	44"	44"	44"
T Gas Connection Height	1-1/2"	1-1/2"	1-1/2"
U Gas Connection Inset	6-3/8"	6-3/8"	6-3/8"
V Gas Connection Width	3"	3"	3"
W Clearance to Corner of Unit	2-3/4"	2-3/4"	2-3/4"
Non-combustible Material Required Above Appliance	Not Required	11-1/2"	10"

\* Important: Framing height requires consideration of the hearth depth.  
Dimension N = N + the thickness of the installed hearth.

\*\*\* Top Vent Only

## FRAMING - G800EH

FRAMING	COOL WALL	CLEAN FRONT	OUTSIDE FINISH
M Framing Width	36-1/2"	37-1/2"	36-1/2"
N* Framing Height	43"	52"	52"
O Framing Depth	22"	22"	22"
P Corner Facing Wall Width	42-1/2"	46-1/2"	46-1/2"
Q Corner Facing Wall Width	60"	65-3/4"	65-3/4"
R Framed Chase Ceiling Enclosure	82"	84"	84"
S Vent Centerline Height - Top	44"	44"	44"
T Gas Connection Height	1-1/2"	1-1/2"	1-1/2"
U Gas Connection Inset	6-3/8"	6-3/8"	6-3/8"
V Gas Connection Width	3"	3"	3"
W Clearance to Corner of Unit	2-3/4"	2-3/4"	2-3/4"
Non-combustible Material Required Above Appliance	Not Required	11-1/2"	10"

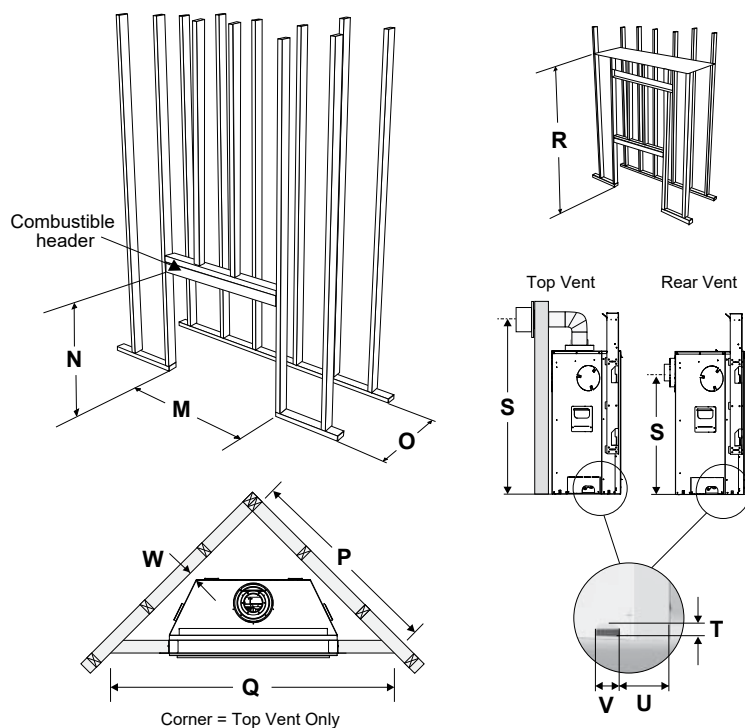
\* Important: Framing height requires consideration of the hearth depth.  
Dimension N = N + the thickness of the installed hearth.

**For installation, framing and clearances see manuals on our website: [www.regency-fire.com](http://www.regency-fire.com)**

NOTE: All product specifications are subject to change without notice. Before installing refer to the relevant product manual for full and up-to-date information.

# SPECIFICATIONS

## FRAMING - G600EC, G600C



**IMPORTANT:** Corner applications are vented from the top only - rear venting cannot be used.

FRAMING		COOL WALL	CLEAN FRONT	OUTSIDE FINISH
M	Framing Width	33"	33-1/2"	33-1/2"
N*	Framing Height	40"	40"	40"
O	Framing Depth	15"	16-3/4"	16-3/4"
P	Corner Facing Wall Width	37-1/4"	40"**	40"**
Q	Corner Facing Wall Width	52-1/2"	57"**	57"**
R	Framed Chase Ceiling Enclosure - Rear	74-1/2"	43-1/2"	43-1/2"
R	Framed Chase Ceiling Enclosure - Top	74-1/2"	60"	60"
S	Vent Centerline Height - Rear	24-7/8"	24-7/8"	24-7/8"
S	Vent Centerline Height - Top	40"	40"	40"
T	Gas Connection Height	1-7/8"	1-7/8"	1-7/8"
U	Gas Connection Inset	8-3/8"	8-3/8"	8-3/8"
V	Gas Connection Width	3-1/2"	3-1/2"	3-1/2"
W	Clearance to Corner of Unit	1/2"	2"	2"
	Non-combustible Material Required Above Appliance	no	yes	yes

\* Important: Framing height requires consideration of the hearth depth.

Dimension N = N + the thickness of the installed hearth.

\*\* Top Vent Only

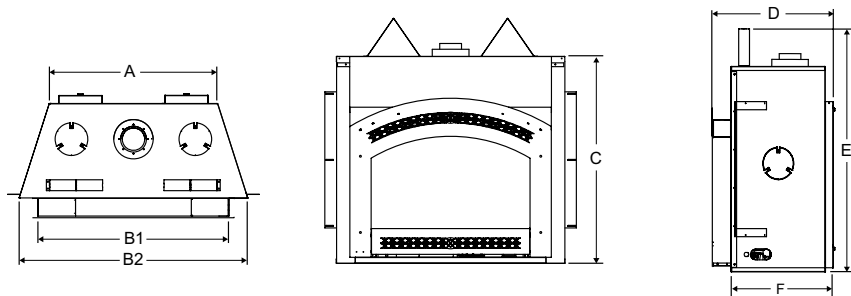
**For installation, framing and clearances see manuals on our website: [www.regency-fire.com](http://www.regency-fire.com)**

NOTE: All product specifications are subject to change without notice. Before installing refer to the relevant product manual for full and up-to-date information.



# SPECIFICATIONS

## EXCALIBUR P90E

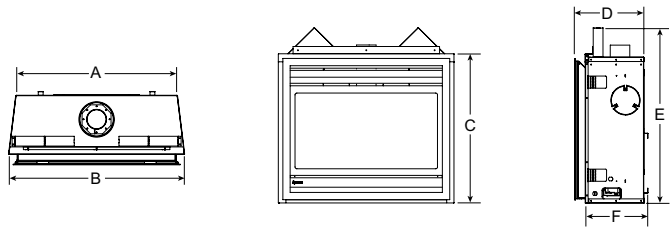


	P90E
A	31"
B1	35-1/8"
B2	42"
C	38"
D*	22-1/2"
E	45"
F	19-1/8"

\* Without faceplate

## PANORAMA DIRECT VENT FIREPLACES

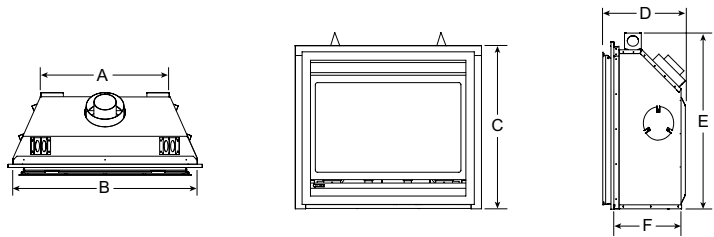
P36D  
P36E  
P36



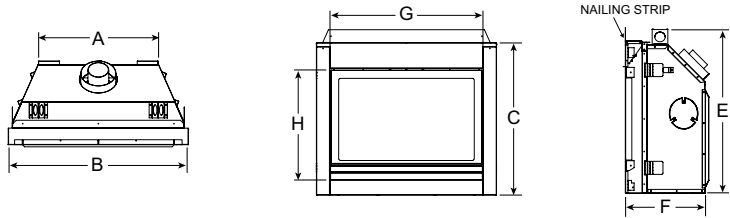
	P36D	P36E/ P36	P33E/ P33	P33CE
A	33-1/16"	33-1/8"	23"	23"
B	36-1/16"	36-1/16"	33"	34-9/16"
C	30-1/2"	14-3/4"	14-1/2"	29-1/4"
D*	19-1/8"	15"	14-3/4"	--
E	36"	36"	31-1/2"	31-3/4"
F	17-1/8"	12-3/4"	12-3/4"	16"
G	--	--	--	29-7/16"
H	--	--	--	21-3/8"

\* Includes Vignette faceplate  
See manual for Vignette finishing trim dimensions

P33  
P33E



P33CE



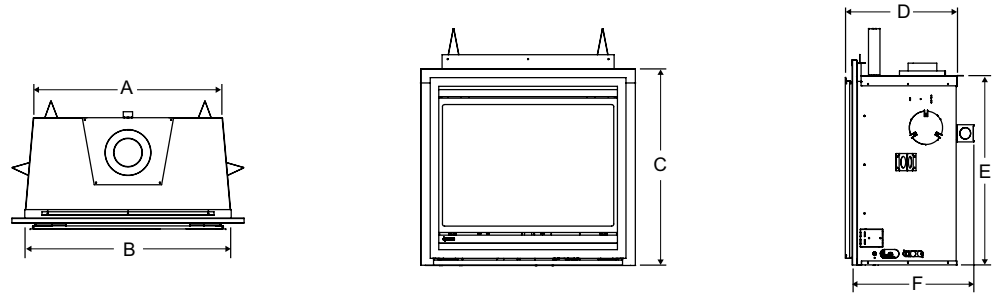
For installation, framing and clearances see manuals on our website: [www.regency-fire.com](http://www.regency-fire.com)

NOTE: All product specifications are subject to change without notice. Before installing refer to the relevant product manual for full and up-to-date information.

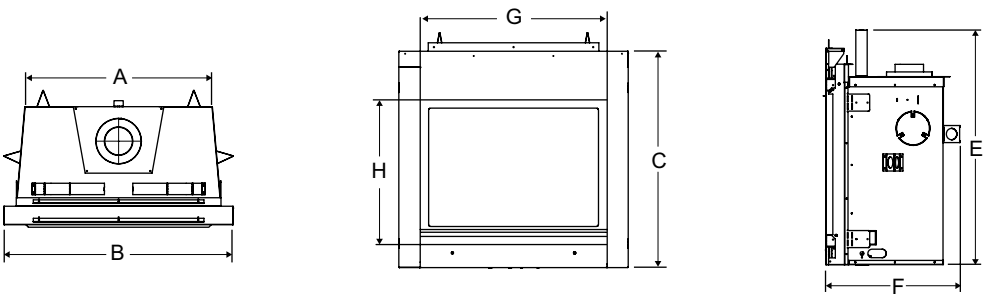
# SPECIFICATIONS

## BELLAVISTA DIRECT VENT FIREPLACES

**B41XTE**  
**B36XTE**



**B41XTCE**  
**B36XTCE**



	B41XTCE	B41XTE	B36XTCE	B36XTE
A	38-3/8"	38-3/8"	33-1/16"	33-1/16"
B	46-11/16"	41-11/16"	40-5/8"	36"
C	44-1/4"	36-11/16"	38-1/16"	34-5/8"
D*	--	24-9/16"	--	22-5/16"
E	49-1/2"	36-3/8"	41-5/16"	33-1/8"
F	26-3/16"	22-3/8"	23-5/8"	20-7/16"
G	38-7/16"	--	32-7/8"	--
H	29-1/8"	--	25-5/8"	--

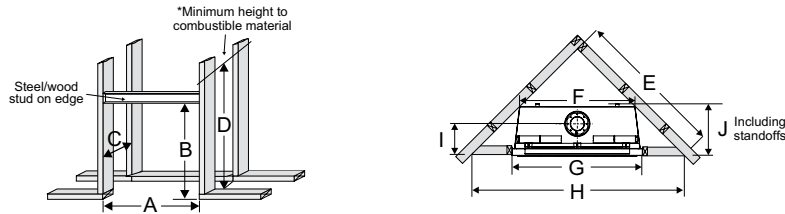
\* Includes Vignette Faceplate

**For installation, framing and clearances see manuals on our website: [www.regency-fire.com](http://www.regency-fire.com)**

NOTE: All product specifications are subject to change without notice. Before installing refer to the relevant product manual for full and up-to-date information.



# SPECIFICATIONS



## P36/P36E/P36D

INSTALLATION	UNITS	A	B	C	D*	E	F	G	H	I	J
Framing with Vignette Faceplate Stepped Finish	P36/P36E	36-1/4"	40-3/4"	12-3/4"	46"	42-7/16"	33-1/4"	36-1/4"	60"	7-1/4"	12-3/4"
	P36D	36-1/4"	40-3/4"	17-3/8"	46"	48"	33-1/4"	36-1/4"	68"	11-1/4"	17-1/8"
Framing with Vignette Faceplate & Finishing Trim Finished Flush	P36/P36E	38"	41-5/8"	14-3/4"	46"	43-11/16"	33-1/4"	38"	61-13/16"	9-1/4"	14-3/4"
	P36D	38"	41-5/8"	19-3/8"	46"	50-9/16"	33-1/4"	38"	71-9/16"	13-1/4"	-
Framing with Louvers and safety screen	P36/P36E	36-1/4"	36-1/4"	12-3/4"	46"	42-7/16"	33-1/4"	36-1/4"	60"	7-1/4"	12-3/4"
	P36D	36-1/4"	37-1/4"	17-3/8"	46"	48"	33-1/4"	36-1/4"	68"	11-1/4"	17-1/8"

\* 'D' is minimum height to combustible materials including the minimum 2" top clearance to the horizontal vent.

## P90E

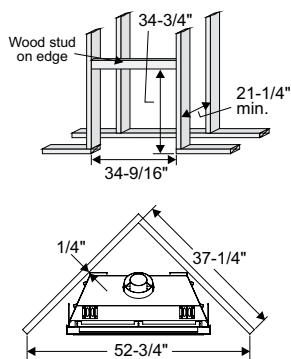
INSTALLATION	UNIT	A	B	C	D	E	F	G	H	I	J
Framing and Finishing	P90E	46-1/2"	45-1/4" 46-3/8"*	21-1/2"	53-3/4"	51-1/8"	31"	46-1/2"	72-1/4"	13-11/16"	19-1/4"

\* If raised 1-1/8" using base standoffs.

## P33/P33E

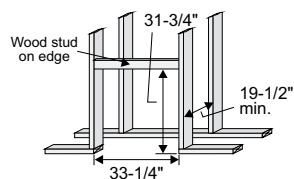
**VERTICAL TERMINATION OR VERTICAL RISE WITH HORIZONTAL TERMINATION**  
Vignette and Vignette Finishing Trim - Finished Flush

For Both Rigid & Flex



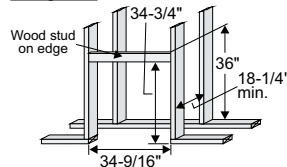
**VERTICAL TERMINATION OR VERTICAL RISE WITH HORIZONTAL TERMINATION**  
Vignette and Vignette Finishing Trim Stepped Finish or Safety Screen and Louvers

For Both Rigid & Flex

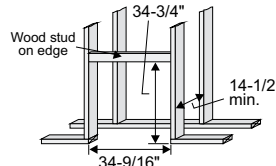


**REAR TERMINATION**  
Vignette and Vignette Finishing Trim - Finished Flush

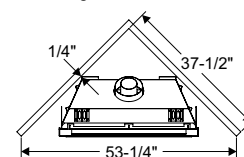
For Rigid Vent



For Flex Vent

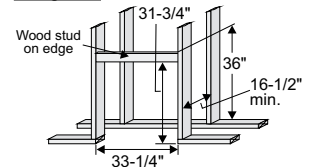


For Both Rigid & Flex

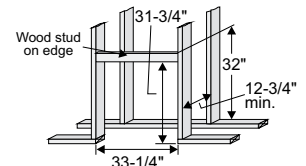


**REAR TERMINATION**  
Vignette and Vignette Finishing Trim Stepped Finish or Safety Screen and Louvers

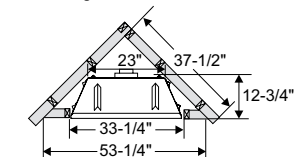
For Rigid Vent



For Flex Vent



For Both Rigid & Flex

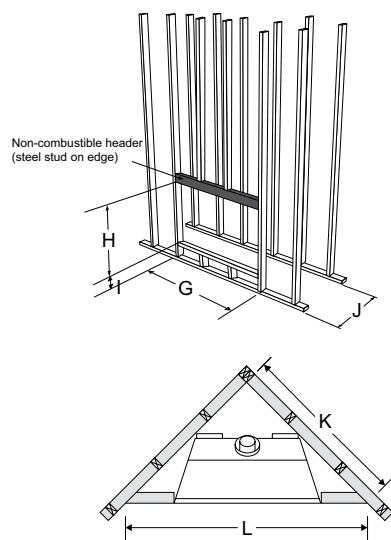


**For installation, framing and clearances see manuals on our website: [www.regency-fire.com](http://www.regency-fire.com)**

NOTE: All product specifications are subject to change without notice. Before installing refer to the relevant product manual for full and up-to-date information.

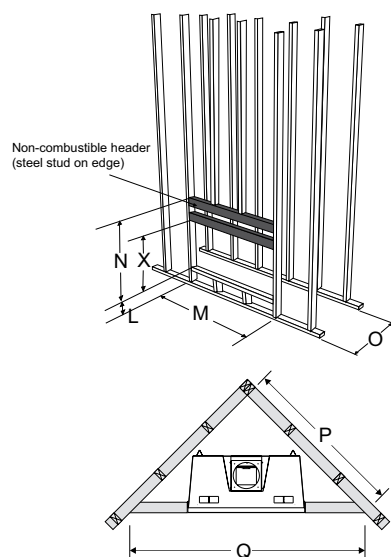
# SPECIFICATIONS

## P33CE



FRAMING	P33CE WITH NON-COMBUSTIBLE BOARD ONLY	P33CE WITH TILE, STONE, BRICK, SLATE, VERONA SURROUND OR OTHER NON-COMBUSTIBLE FINISH
G	35"	35"
H	31-3/4"	31-3/4"
I	0" (when not using a surround)	0" 3-5/16" min (w/ verona surround)
J	23-1/4" Vertical Rise 20-1/4" Rigid 16-1/2" Flex	22-3/4" Vertical Rise 19-3/4" Rigid 16" Flex
K	39-1/4"	38-15/16"
L	55-1/2"	54-1/2"

## B36XTCE



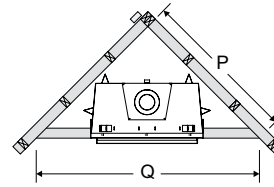
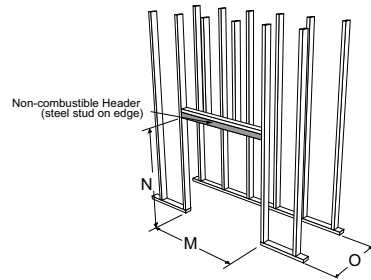
FRAMING	B36XTCE
L	0"
M	41-1/4"
N	46-3/4"
O (Rear Vent)	23-7/8"
O (Top Vent)	23-7/8"
P (Rear Vent)	57-7/8" AstroCapXL 66-1/8" other approved caps
P (Top Vent)	53-1/4"
Q (Rear Vent)	81-1/2" AstroCapXL 93-1/2" other approved caps
Q (Top Vent)	75-1/4"
X	41" (Optional steel stud)

**For installation, framing and clearances see manuals on our website: [www.regency-fire.com](http://www.regency-fire.com)**

NOTE: All product specifications are subject to change without notice. Before installing refer to the relevant product manual for full and up-to-date information.

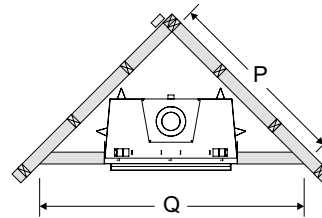
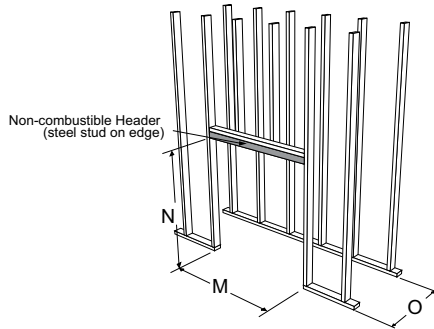
# SPECIFICATIONS

## B41XTCE



INSTALLATION	M	N	O (REAR VENT)	O (TOP VENT)	P	Q
Framing	47-1/4"	49-1/2"	26-1/2"	25-7/8"	65-1/4"	91-11/16"

## B36XTE & B41XTE



INSTALLATION	UNITS	M	N	O (REAR VENT)	O (TOP VENT)	P (REAR VENT)	P (TOP VENT)	Q (REAR VENT)	Q (TOP VENT)
Framing with Vignette (Stepped Finish) or with flush panels and safety screen	B36XTE	40-5/8"	42"	20-3/4"	20-1/2"	53" - AstroCapXL 61-1/2" - other approved caps	48-5/8"	75" - AstroCapXL 87" - other approved caps	68-3/4"
	B41XTE	47-1/4"	49-1/2"	23-1/4"	22-5/8"	60-1/4"	-	85-3/16"	-
Framing with Vignette & Vignette Trim Finished Flush	B36XTE	42-1/4"	42"*	22-1/8"	21-7/8"	55-11/16" - AstroCapXL 64-3/16" - other approved caps	51-5/16"	78-3/4" - AstroCapXL 90-3/4" - other approved caps	72-1/2"
	B41XTE	48-15/16"	50-1/4"	24-7/8"	24-7/8"	63-3/8"	-	89-5/8"	-

\* NOTE: When using the optional Vignette finishing trim, this can be installed as a 3-sided or 4-sided finish trim. If choosing to use this as a 4-sided finish trim the framing would need to be increased by 11/16" minimum in order for this to fit. This must be to the finished floor.

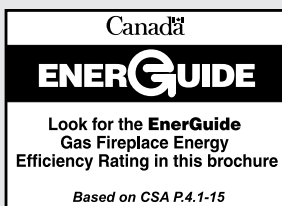
**For installation, framing and clearances see manuals on our website: [www.regency-fire.com](http://www.regency-fire.com)**

NOTE: All product specifications are subject to change without notice. Before installing refer to the relevant product manual for full and up-to-date information.





Find More Products at **REGENCY-FIRE.COM**



©2025 FPI Fireplace Products International Ltd. Regency®, Panorama®, Excalibur®, Bellavista®, SureFire®, Heat Wave™, Heat Release™, and AstroCap® are registered or proprietary trademarks of FPI Fireplace Products International Ltd. All rights reserved.

Printed in Canada (08/25) Part No. 944-227

Version No: 2025-2

Your Regency Dealer