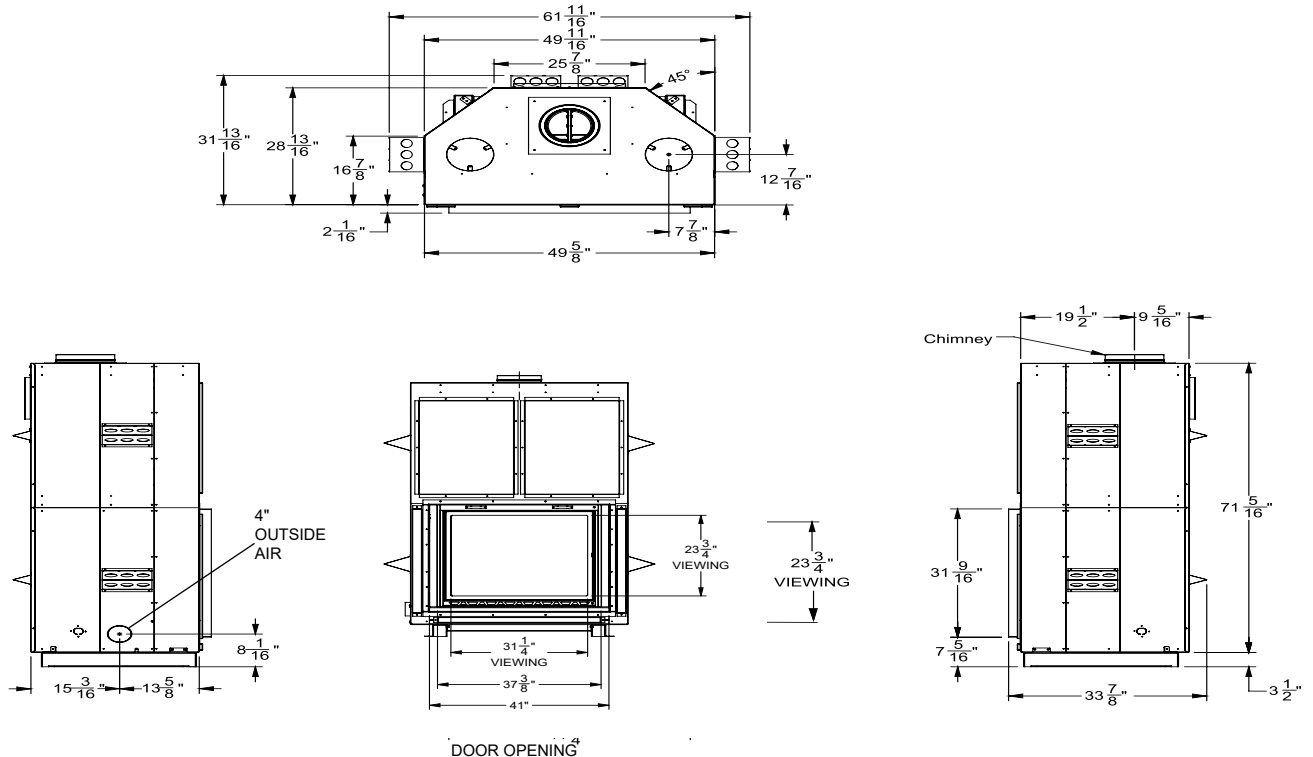


CF780 Wood Fireplace

Model	CF780
Flue Size	8" (203mm)
Maximum Log Size	18" (457mm)
Shipping Weight	921lbs (418kg)
Firebox Size	7.91 cu.ft.



UNIT DIMENSIONS



* The fireplace bottom standoff is required if the fireplace is installed on a combustible floor surface or on a combustible floor structure or on a combustible raised platform. See section "INSTALLATION: Flooring Requirements" for all the details regarding the requirements to use the fireplace bottom standoff.

* The chase cavity requires four (4) ventilation grills which are included with the unit. Each grill requires a minimum of 28.5 square inches of open area.
Two (2) at ceiling level and two (2) at floor level. Grills must be installed and are supplied with the unit.

Optional: If installing grills other than the ones supplied, you must adhere to the minimum open area. For example, you can install two (2) large grills, one at ceiling level and one at floor level, but each grill must be 57 square inches of open area.

** Shown with Anchor Plate.

The anchor plate height will vary depending on the specific chimney manufacturer. See specific chimney manufactured product catalogue for complete details.

CLEARANCES

TABLE 2 - COMBUSTIBLE MANTEL CLEARANCES

0" to 6"	7"
7" to 12"	12"

A combustible mantel shelf **MUST NOT** be installed less than 7" above the top of the fireplace opening. A combustible mantel shelf **MUST NOT** be deeper than 12".

For combustible mantel shelf depths between 6" and 12", simply install the mantel shelf at a distance above the fireplace opening corresponding to the mantel shelf depth.

If the combustible mantel shelf varies in depth, it has to be installed so that its thickest part is not installed lower than the corresponding minimum installation height. Also, the thinnest point of the mantel shelf must not be installed lower than the minimum installation height corresponding to its depth.

Refer to the "INSTALLATION: Mantel" section.

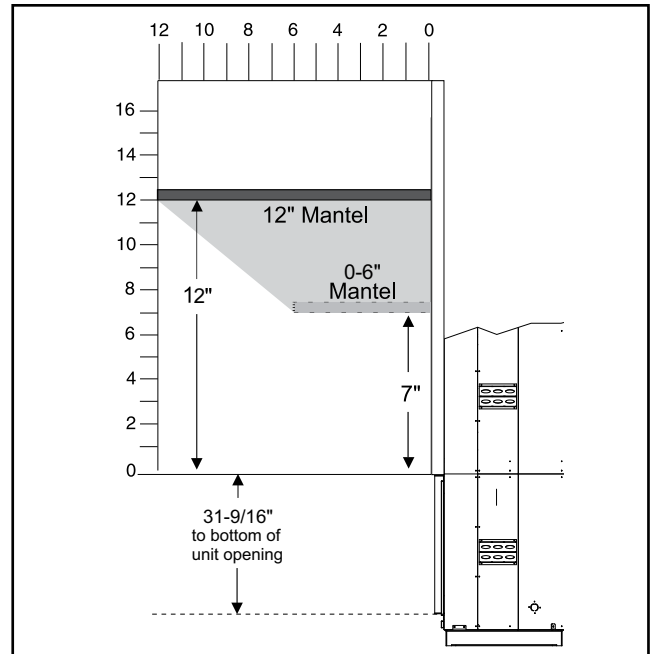


TABLE 3 - MANTEL LEG CLEARANCES

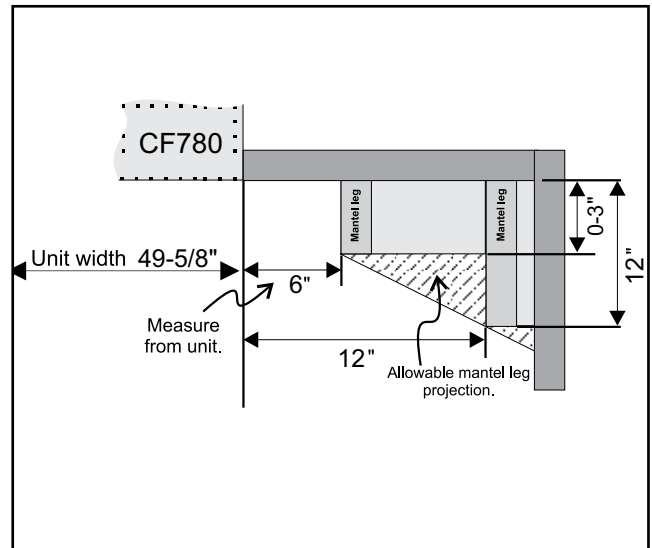
Maximum Mantel Leg Depth	Minimum Installation Height
0" to 3"	6"
12"	12"

A combustible mantel leg **MUST NOT** be installed less than 6" from either side of the fireplace opening. A combustible mantel leg **MUST NOT** be deeper than 12".

For combustible mantel leg depths between 6" and 12", you can calculate the minimum installation distance between the two mantel legs given as follows:

If the combustible mantel leg varies in depth, it has to be installed so that its thickest part is not installed closer than the corresponding minimum installation distance. Also, the thinnest point of the mantel leg must not be installed closer than the minimum installation distance corresponding to its depth.

Refer to the "INSTALLATION: Mantel" section.



MANTEL

Masonry and other non-combustible mantels (shelf and posts) can be placed anywhere around the fireplace opening.

The only combustible material accepted on the facing of the fireplace is for a mantel (shelf and posts).

If you need to attach the mantel to the front of the fireplace refer to page to see where screws are permitted on the front of the fireplace facing.

UNIT CLEARANCES

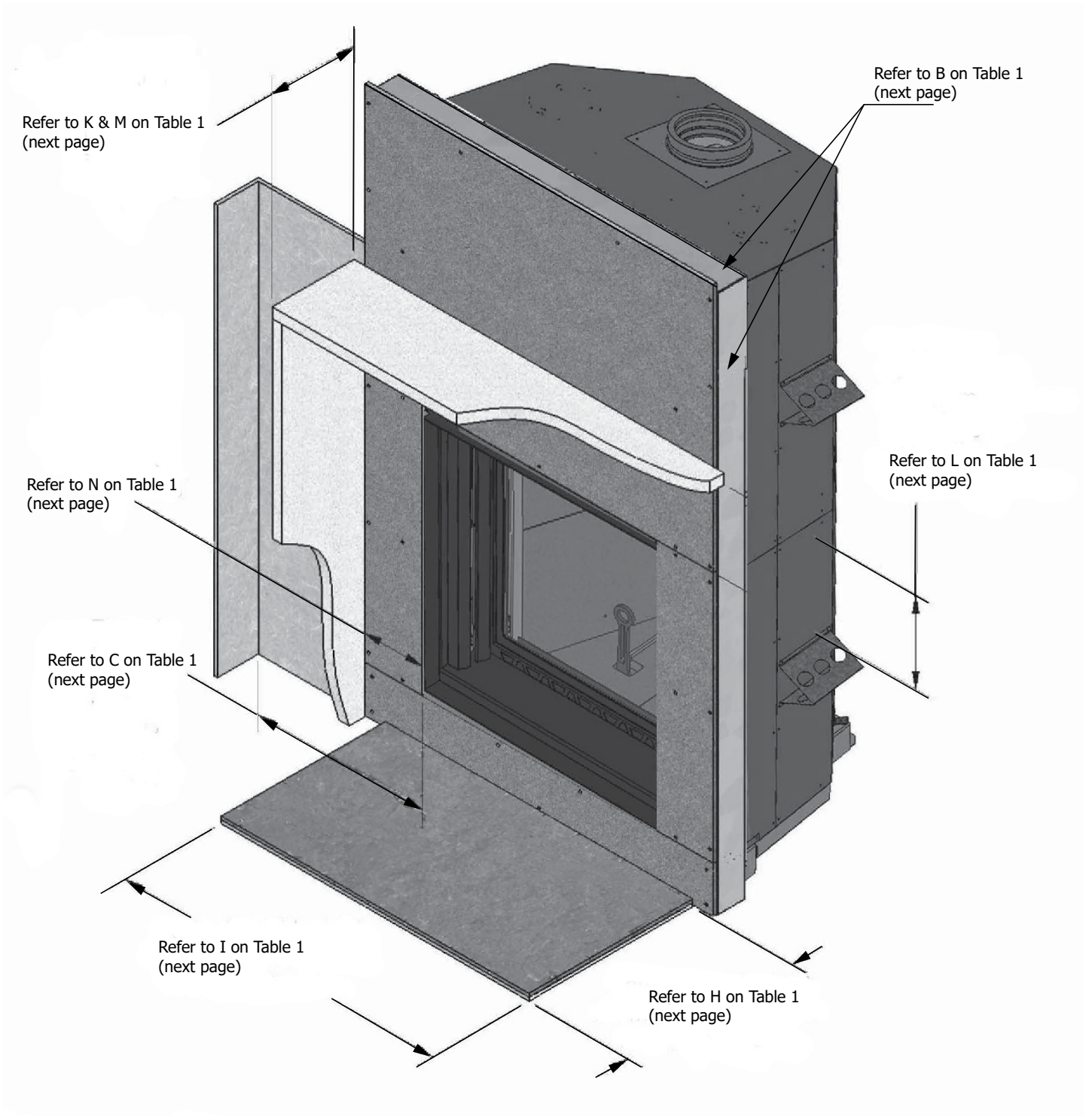
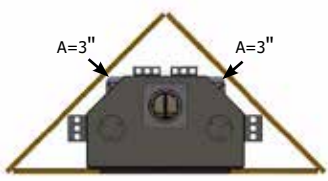


TABLE 1 - UNIT CLEARANCES AND SPECIFICATIONS

A*	Distance to combustible material from side, back, and standoffs	0" (0mm)
B	Clearance from Top/Side of unit	No Combustible material (IE: Wood studs): Only steel stud on front, top edge and sides permitted. Also see framing specifications in this manual.
C	Minimum distance from side wall to the side of the fireplace opening	24" (610mm)
D	Minimum ceiling clearance: Always take measurement from the lowest point on the fireplace,; Including Base-Radiation Shield - When the bottom standoff is installed, measure from the base of the bottom standoff to the ceiling (refer to the "INSTALLATION: Flooring Requirements" section for details)	8' (2.44m)
E	Minimum chimney height: minimum total chimney height from fireplace top to below the chimney rain cap	12' (3.66m)
F	Maximum chimney height: maximum total chimney height from fireplace top to below the chimney rain cap	60' (18.3m)
G	Maximum chimney height supported by the fireplace	15' (4.57m)
H	Minimum depth of non-combustible hearth extension: from the front of the fireplace (refer to the "INSTALLATION: Hearth Extension" section for details)	20" (508mm)
I	Minimum width of non-combustible hearth extension: total width, must be centered on the firebox opening (refer to the "INSTALLATION: Hearth Extension" section for details)	61-3/8" (1559mm)
J	Minimum width of the spark guard	61-3/8" (1559mm)
K	Maximum mantel shelf depth (see Table 2 for other mantel sizes)	12" (305mm)
L	Minimum height of a combustible mantel shelf above the top of the fireplace opening (to the bottom of the combustible mantel) (refer to the "INSTALLATION: Mantel" section for details)	See Table 2
M	Maximum mantel leg depth (see Table 3 for other mantel leg sizes)	12" (305mm)
N	Minimum distance between each combustible mantel leg and the fireplace opening (refer to the "INSTALLATION: Mantel" section for details)	See Table 3
*	Note: For 45°corner installs: 3" clearance is required from back corners of unit.	

INSTALLATION

Check with your local authority having jurisdiction (such as municipal building department, fire department, fire prevention bureau, etc.) regarding restrictions and installation requirements, and the need to obtain a permit.

WARNING: IF THIS FIREPLACE IS NOT PROPERLY INSTALLED, A HOUSE FIRE CAN RESULT. FOR YOUR SAFETY, FOLLOW THE INSTALLATION INSTRUCTIONS AND CLEARANCES. DO NOT PACK REQUIRED AIR SPACES WITH INSULATION OR OTHER MATERIALS.

LOCATION

The CF780 must be installed within the vapor barrier of the home. It cannot be installed outside, or on a three season porch. Your CF780 fireplace may be installed in different ways (see Diagram of framing examples). Specifications of the fireplace along with clearances are shown in Diagram 1, Diagram 2, Table 1, Table 2, and Table 3. We recommend that you take the time to plan your entire installation (fireplace and chimney) before beginning the actual installation (refer to General Installation next page).

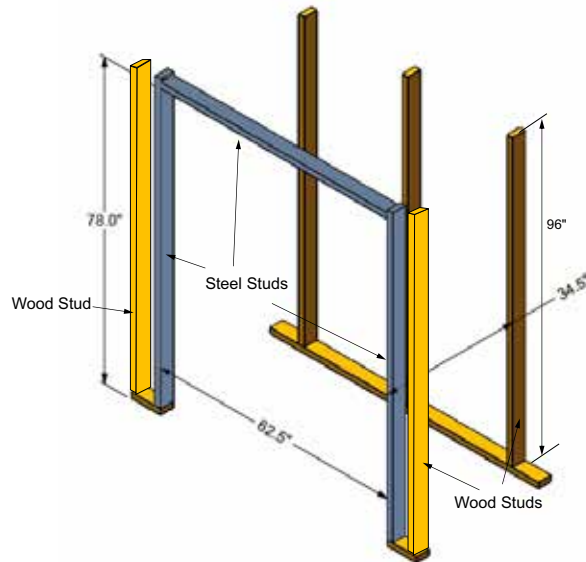
1. Note the location of roof and floor joists. Choose a location where you can avoid cutting/damaging the floor joists/roof trusses.
2. Do not build shelves or cupboards in the area above the fireplace. This space must be kept empty.
3. We recommend the chimney be installed in the interior of the building as it will provide better performance than an exterior chimney. In areas with continuous temperatures below 32°F (0°C) the use of an exterior chimney may result in operating problems such as poor draft and excessive condensation of combustion products. If you do install an exterior chimney we recommend that you install it within an insulated enclosure (see Installation: Chase Enclosure).

WARNING: In order to avoid the possibility of exposed insulation or the vapor barrier coming in contact with the appliance body, it is recommended that the walls of the enclosure be finished off with drywall as you would finish any other interior/insulated wall of a home. This will ensure that clearance to combustibles is maintained within the cavity. Objects placed in front of the appliance but not limited to such as sofa's, furniture, etc., must be kept a minimum of 48" (1219 mm) away from the front face of the appliance.

CEILING CLEARANCE

The ceiling clearance varies depending if the fireplace is installed on a non-combustible floor or on a combustible floor.
 On a non-combustible floor with a non-combustible floor structure, the ceiling clearance is the distance from the base of the fireplace to the ceiling.
 On a combustible floor or on a combustible floor structure, you need to install the fireplace on the fireplace bottom standoff thus the ceiling clearance is the distance from the base of the fireplace bottom standoff to the ceiling.
 For ceiling clearance requirements refer to Table 1 (D).

FRAMING SPECIFICATIONS



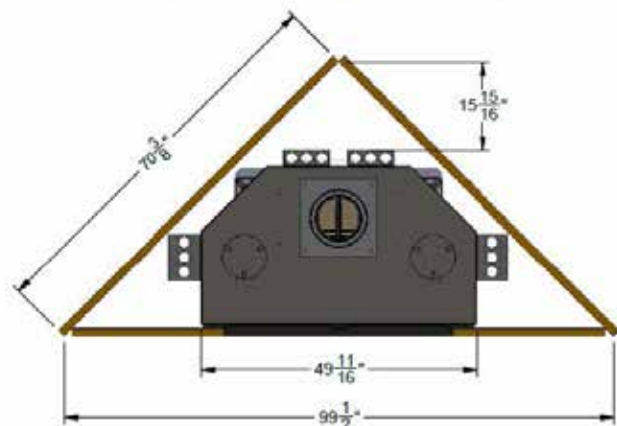
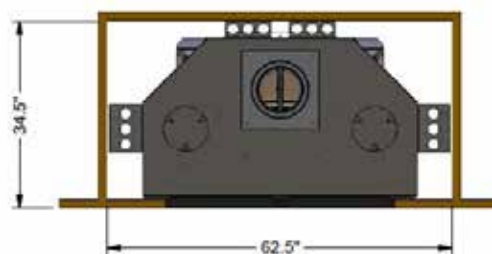
The minimum framing specifications are noted above.

Front face & header –build with steel studs and non-combustible board. Plan out and frame ventilation grills.

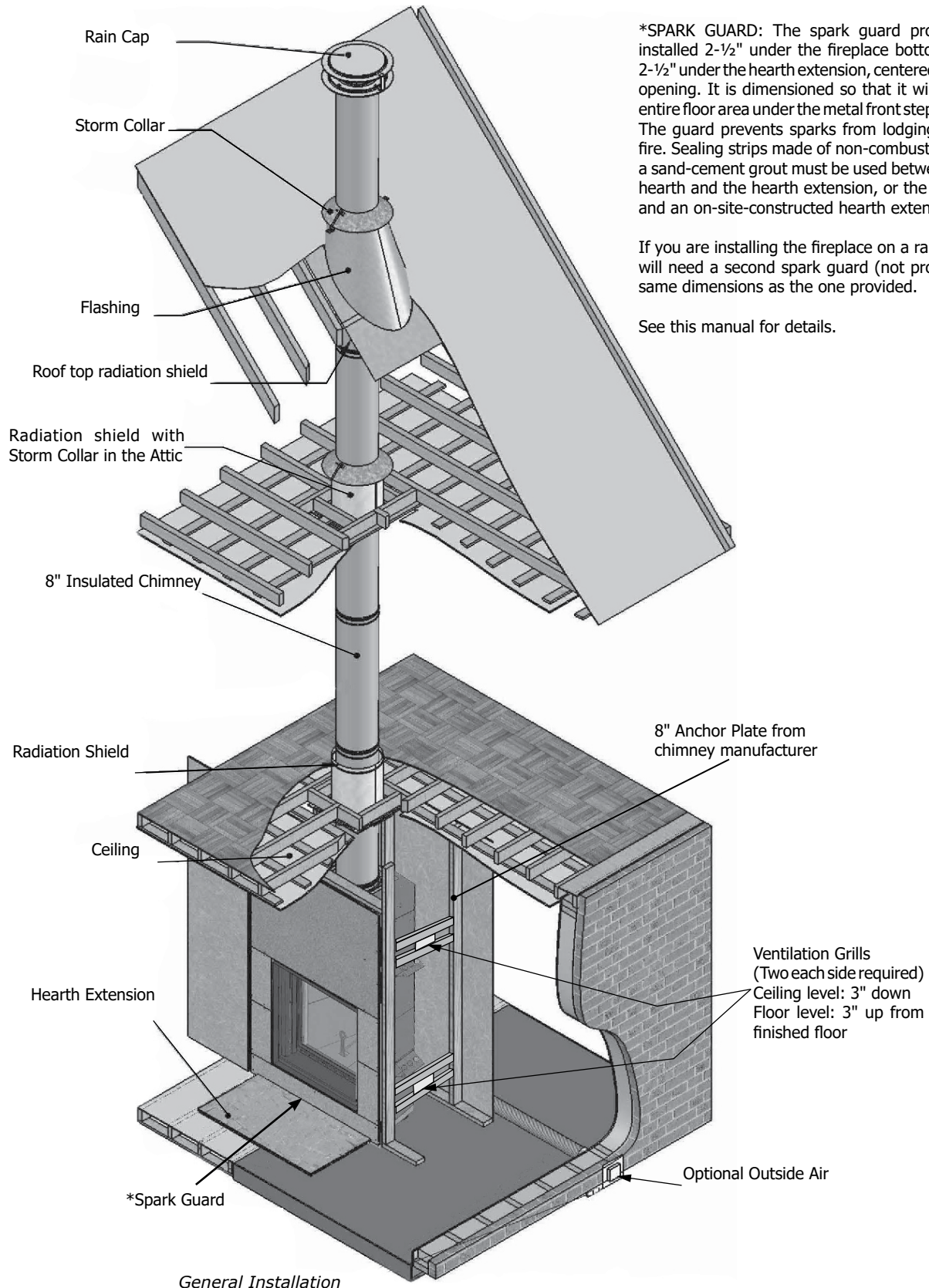
IMPORTANT: See Page 7 under Chase Ventilation Grills prior to framing, as the location of the framed chase opening must be carefully planned if ventilation grills are placed in front of the unit.

Finish with materials such as stone or tile.
 Minimum chase height is 96"

Note: Wood studs may be used outside of where the steel studs are located.



CF780 GENERAL INSTALLATION



CHASE VENTILATION GRILLS

The unit is supplied with four (4) ventilation grills for the chase/fireplace cavity. Each grill must have a minimum of 28.5 square inches of open area. The total minimum open area of chase ventilation is 114 square inches with a minimum of 57 square inches at the ceiling level and 57 square inches at the floor level. The grills must be installed so there is 57 square inches of open area at the ceiling level and 57 squares inches of open area at the floor level.

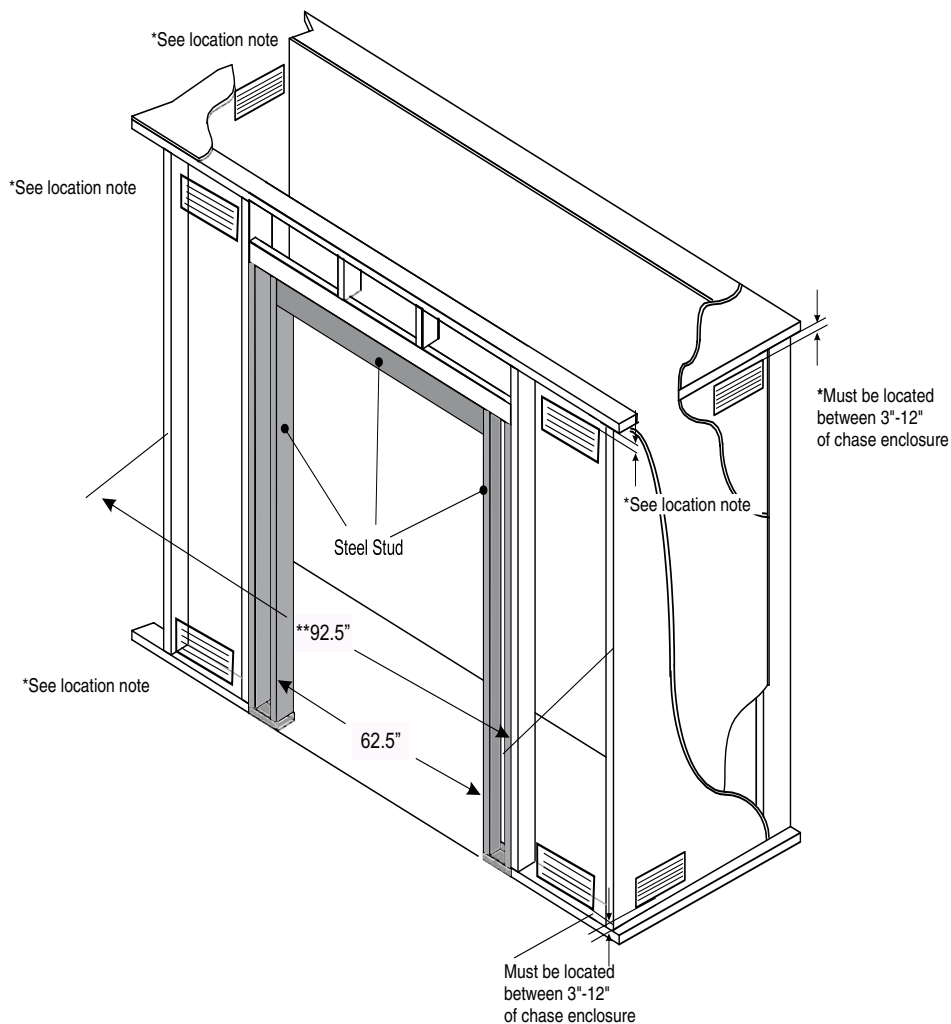
Alternatively, two larger grills (not supplied) may be installed but must be a minimum of 57 square inches of open area each.

Do not remove cover chase grills. These are mandatory and required to ensure there is no overheating of the chase cavity.

Chase ventilation grills are required for all installs. The ventilation grills must be installed within the home to prevent moisture buildup with in the chase/fireplace cavity.

**If placing the four ventilation grills (supplied with unit) in front, we recommend framing the chase cavity a minimum of 92.5" wide to accommodate the ventilation grills on either side of the unit. The overall size of each grill supplied with this unit is 13-3/8" W x 7-3/8" H. If choosing to use other ventilation grills that meet the same requirement of open area, the chase width may be reduced depending on the overall size of the ventilation grill used.

Note: The ventilation grills must be located within the confines of the framed chase.



CHIMNEY SYSTEM CONSIDERATIONS

Regency's CF780 Fireplace is to be installed with one of the following Chimney Systems only. Chimney systems only 8" (203mm) diameter are to be used that comply to ULCS 629 for CDN and UL103HT for USA.

The use of only one of these systems is permitted when installing the fireplace. Do not alter or mix parts from other systems as this may cause a potential hazard and void Regency's limited warranty.

DuraVent	DuraTech	1" Solid Pack	8" (20 cm)
DuraVent	DuraTech Canada (DTC)	1" Solid Pack	8" (20 cm)
DuraVent	DuraPlus HTC	2" Solid Pack	8" (20 cm)
DuraVent	DuraTech Premium	2" Solid Pack	8" (20 cm)
DuraVent (USA only)	DuraPlus	AC Triple Wall	8" (20 cm)
ICC	Excel 2100	1" Solid Pack	8" (20 cm)
Metal Fab	Temp Guard	1" Solid Pack	8" (20 cm)
Olympia Chimney	Champion Chimney System	1" Solid Pack	8" (20 cm)
Olympia Chimney / SBI Venting Division	Ventis	1" Solid Pack	8" (20 cm)
SBI Venting Division	Nexvent	1" Solid Pack	8" (20 cm)
Security Chimney	ASHT+	1" Solid Pack	8" (20 cm)
Security Chimney	S-2100 +	2" Solid Pack	8" (20 cm)
Selkirk	Ultra-Temp (UT)	1" Solid Pack	8" (20 cm)
Selkirk	Sure-Temp (ST)	1" Solid Pack	8" (20 cm)
Selkirk	Hart & Cooley (TLC)	1" Solid Pack	8" (20 cm)
Selkirk	UltimateOne	1" Solid Pack	8" (20 cm)
Selkirk	CF Sentinel (CF)	2" Solid Pack	8" (20 cm)
Selkirk	Super Pro 2100 (ALT)	2" Solid Pack	8" (20 cm)
Selkirk	Super Vent 2100 (JM)	2" Solid Pack	8" (20 cm)
Selkirk (USA Only)	Super Vent (JSC)	1" Solid Pack	8" (20 cm)
Metal Fab (USA only)	Metal Fab	Air Cool	8" (20cm)

Note: Anchor plates are provided by the chimney manufacturer and are required for all installations for all above chimney listings.

CHIMNEY

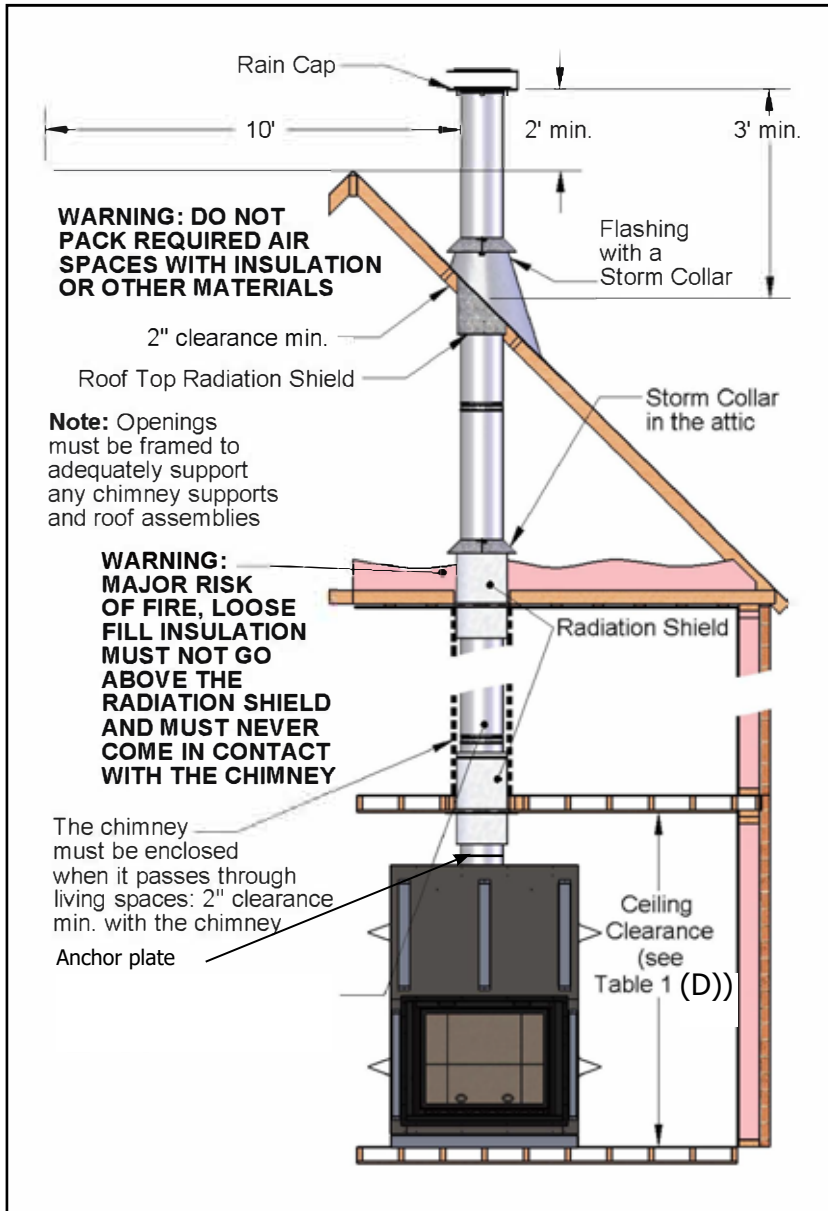
This fireplace is certified for use with 8" chimney only. Please refer to Table 1 (E-F) (in this manual) for the minimum and maximum chimney heights permitted with the CF780.

TABLE 4 - MINIMUM RECOMMENDED FLUE HEIGHTS IN FEET FROM THE TOP OF THE FIREPLACE							
Elevation (ft)	0	2 x 15°	4 x 15°	2 x 30°	4 x 30°	2 x 45° **	4 x 45° **
0 - 1000	12'	13'	14'	15'	18'	16'	20'
1000 - 2000	12'6"	13'6"	14'6"	15'6"	19'	16'6"	20'6"
2000 - 3000	13'	14'	15'	16'	29'6"	17'	21'6"
3000 - 4000	13'6"	14'6"	15'6"	17'	20'	18'	22'6"
4000 - 5000	14'	15'	16'	17'6"	21'	18'6"	23'
5000 - 6000	14'6"	15'6"	17'	18'	21'6"	19'	24'
6000 - 7000	15'	16'	17'6"	18'6"	22'6"	20'	25'
7000 - 8000	15'6"	16'6"	18'	19'	23'	20'6"	25'6"
8000 - 9000	16'	17'	18'6"	20'	24'	21'	26'6"
9000 - 10000	16'6"	17'6"	19'	20'6"	24'6"	22'	27'

We recommend that the minimum height be increased by approximately 1' for every 2000' elevation above sea level. Every 15°, 30° or 45° elbow also increases the minimum height by 1'. For example, if you are living 6000' above sea level, your chimney should terminate at least 15' from the top of the fireplace (12' + 3' for the 6000'). See Table 4 for more precise recommended flue heights.

** 45 degree elbows are not permitted for use in the U.S.A.

CHIMNEY INSTALLATION



NOTE: It is recommended to enclose chimney with proper clearances with blown-in insulation.

General Chimney Installation
 Note: Nailing strips differ than shown in diagram

OFFSET CHIMNEY

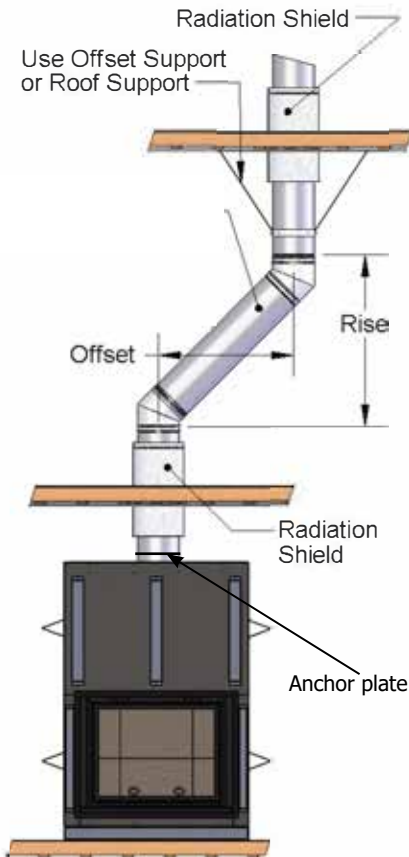
An elbow may be installed directly on top of the fireplace if required. Use the offset option if you need to clear a joist or pass around a cupboard. See following Diagrams for example.

- In **USA**: 30° Maximum - In **Canada**: 45° Maximum

The maximum number of elbows per system is four, resulting in two offsets and returns.

Install the fireplace and chimney as described earlier. When you require an elbow, proceed as follows:

1. Install the elbow. Turn it in the desired direction, and fasten it to the other section with 4 metal screws at the joints.



*Offset Chimney Installation Example
Note: Nailing strips differ than shown in diagram*

THROUGH THE WALL OFFSET: GRAVITY KIT MUST BE INSTALLED

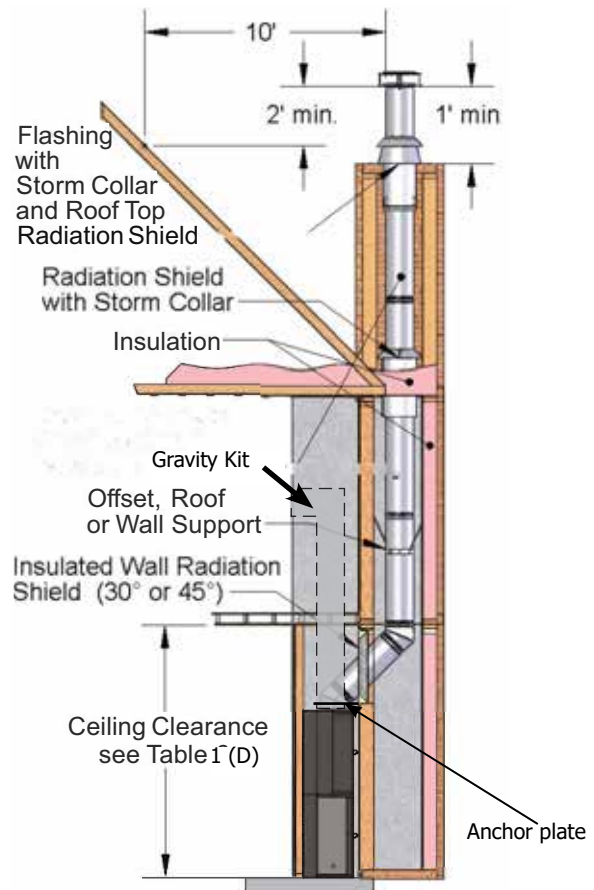
You can also go through a wall at an angle starting directly at the fireplace as depicted in Diagram below. An angled wall insulated radiation shield must be used wherever the chimney passes through an exterior wall.

Make sure to have enough ceiling height for your installation. If the ceiling height is too low for the planned installation you may want to consider installing the fireplace in an outside chase.

Refer to the angled wall insulated radiation shield installation sheets for detailed installation instructions.

2. Install enough lengths to obtain the desired offset. Secure each joint with 4 metal screws.
3. Use another elbow to return the chimney to the vertical direction. Again fasten it to the other section with 4 metal screws at the joints.
4. Install a roof support, a wall support, or an offset support above each offset to support the weight of the chimney (elbows are not designed to support the chimney above an offset).

NOTE: 'Through the wall offset' installation requires installation of the gravity kit along with chase ventilation grills. Failure to do so could result in severe overheating of the fireplace chase cavity.



Offset Chimney Through a Wall Example

CHASE ENCLOSURE

If the chimney runs up the outside of the house, we recommend that it be enclosed in a chase structure. The chase should be constructed in such a way that it is an extension of the home (see Diagram 15). It should be well insulated between the footings and the floor of the home to prevent heat loss. If the climate in your area is mild, insulate the chase at least to the first firestop. If the climate in your area is very cold, insulate the chase enclosure to the top to keep the chimney warmer, increase the draft, and reduce creosote buildup. We also recommend insulating the ceiling of the chase just as if it were in the attic space. This will prevent cold air from dropping down through the chase and into the room where the fireplace is installed.

The chase ventilation must be located on the inside of the home to prevent cold air and moisture entering the fireplace cavity and home.

Some local codes require that the walls be insulated, vapor sealed and sheathed with a fire rated gypsum board. We strongly recommend this procedure for all installations to prevent cold drafts from originating in the fireplace enclosure. If you follow this procedure, we recommend that you do not insulate the wall above the front of the fireplace.

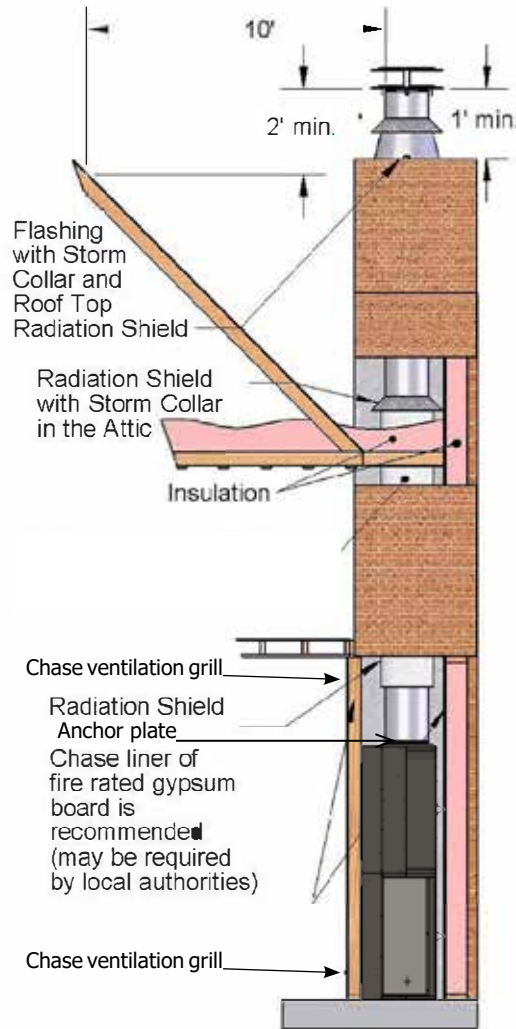


Diagram 15

CHECK LOCAL CODES FOR INSTALLATION REQUIREMENTS AND RESTRICTIONS IN YOUR AREA.